

Huber Heights City Schools District Report Card Data Overview

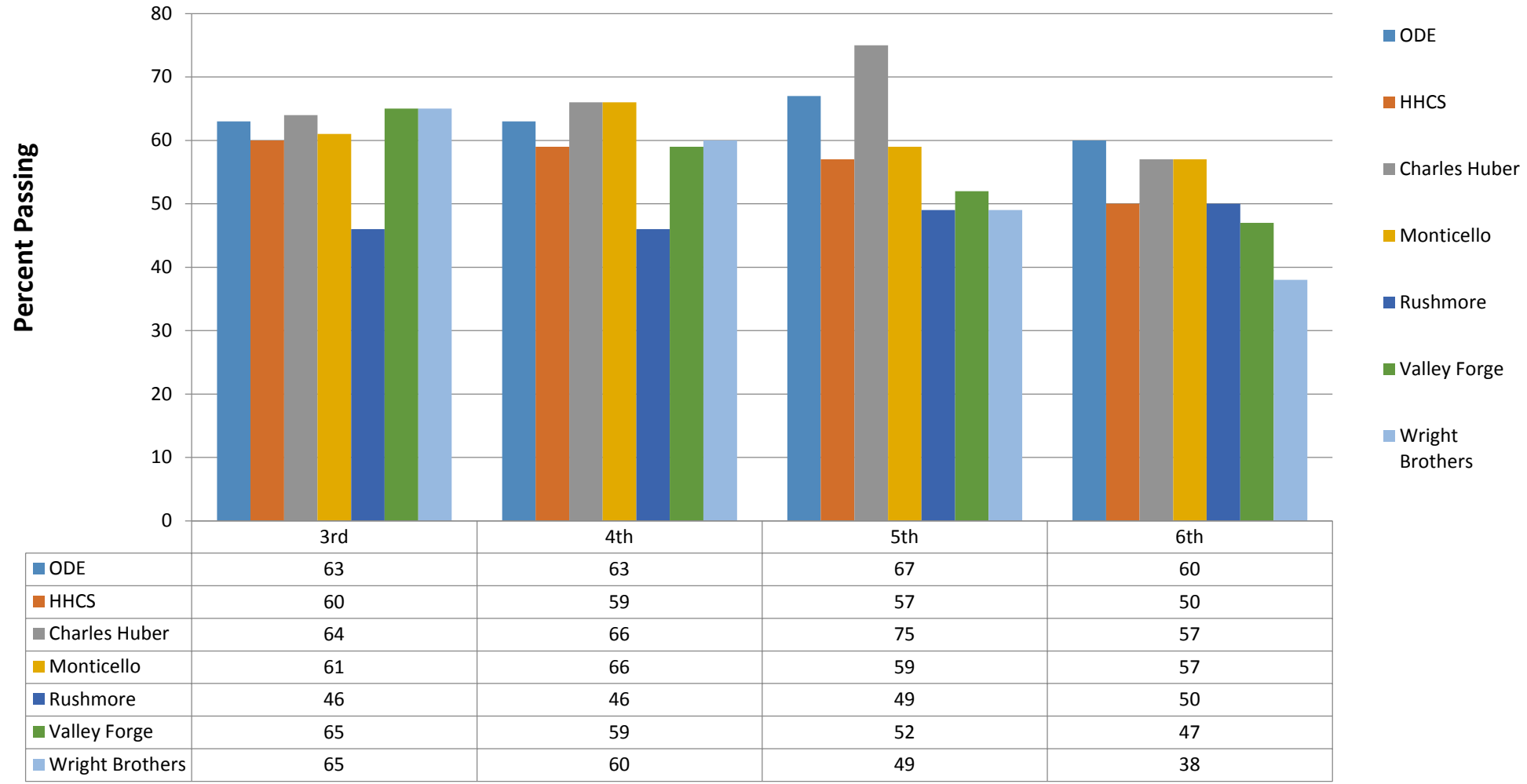
September 14, 2017



September Report:

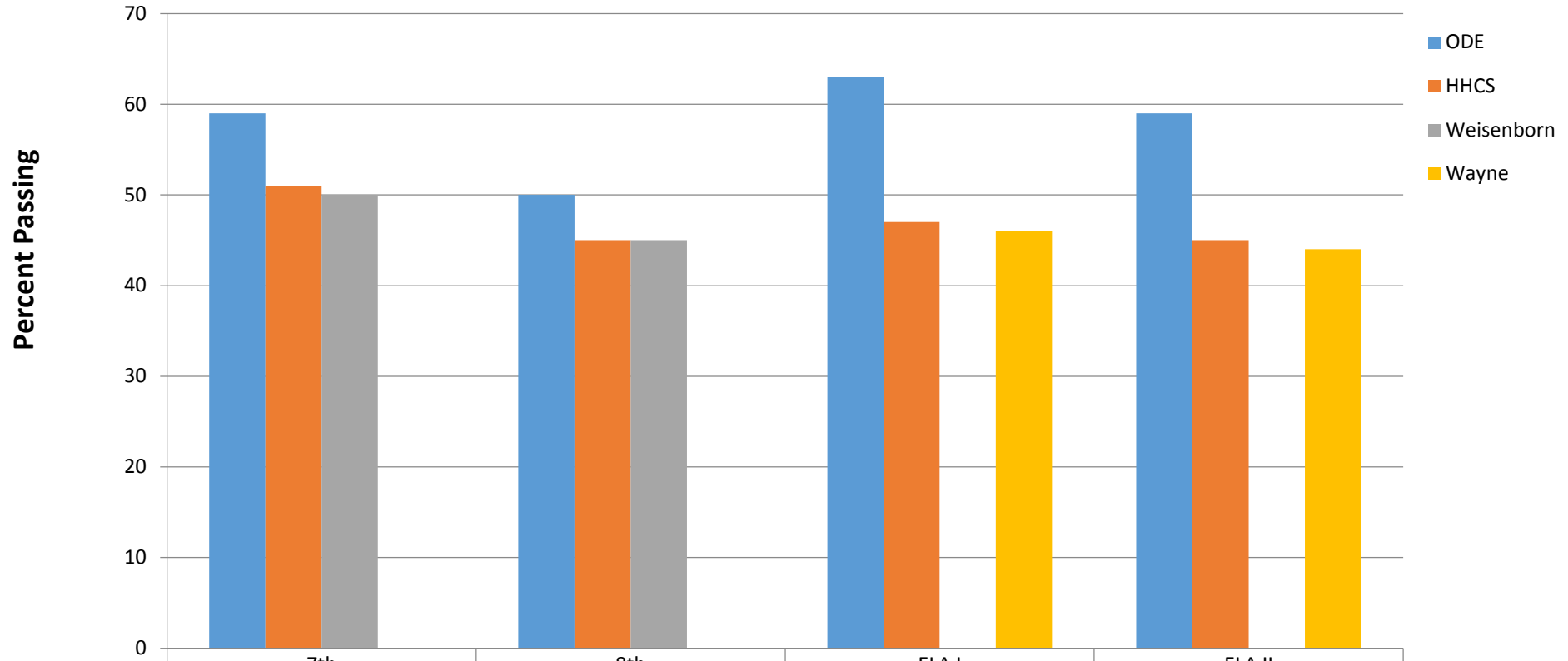
- 2017 Achievement (Comparison to State)
- Report Card Data
- Comparison of School Years (2017 to 2016)

ELA Ohio State Test Results - Spring 2017



Grade Level by Building

ELA Ohio State Test Results - Spring 2017



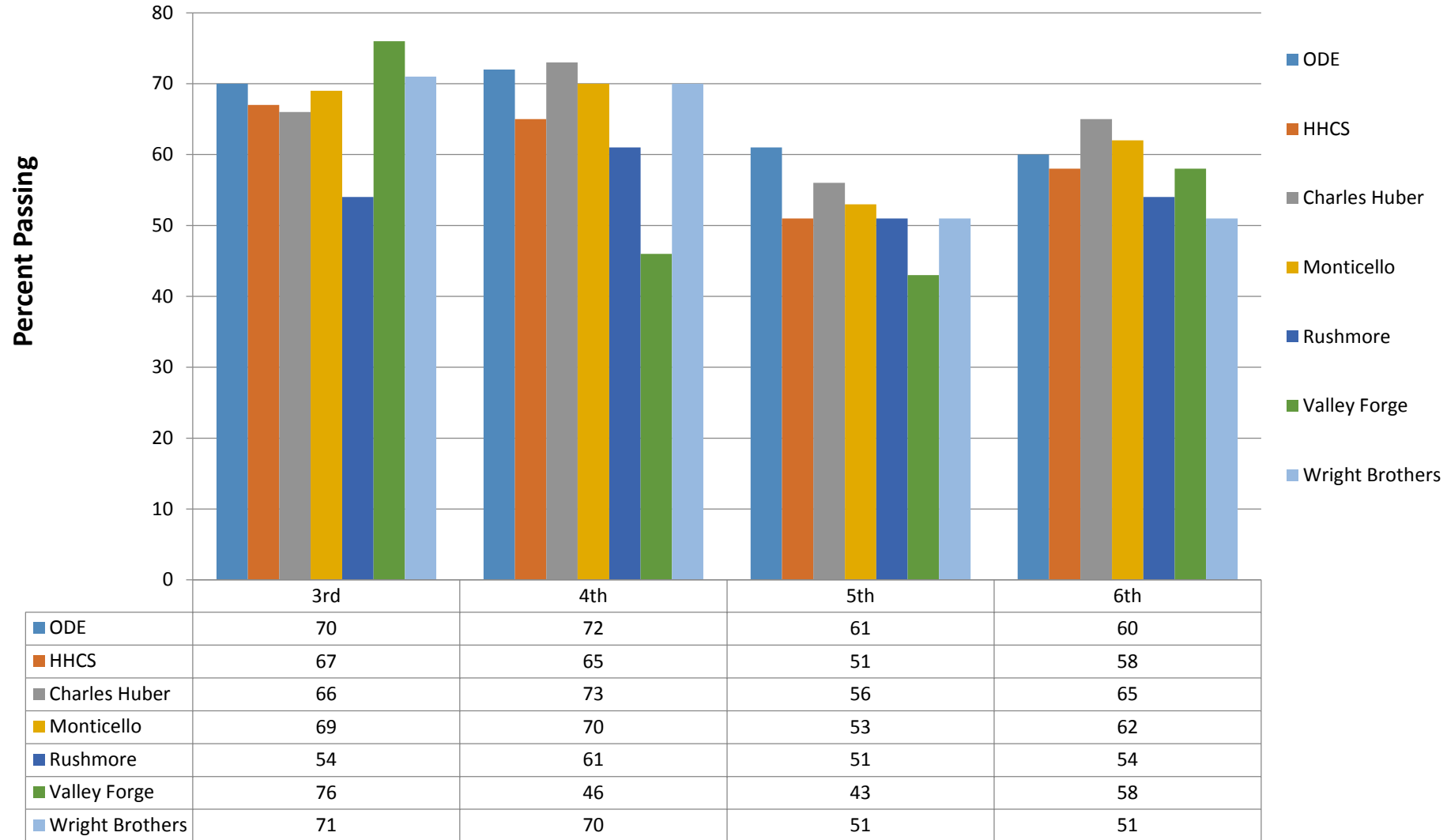
	7th	8th	ELA I	ELA II
ODE	59	50	63	59
HHCS	51	45	47	45
Weisenborn	50	45		
Wayne			46	44

Grade Level by Building

ELA Comparative Highlights

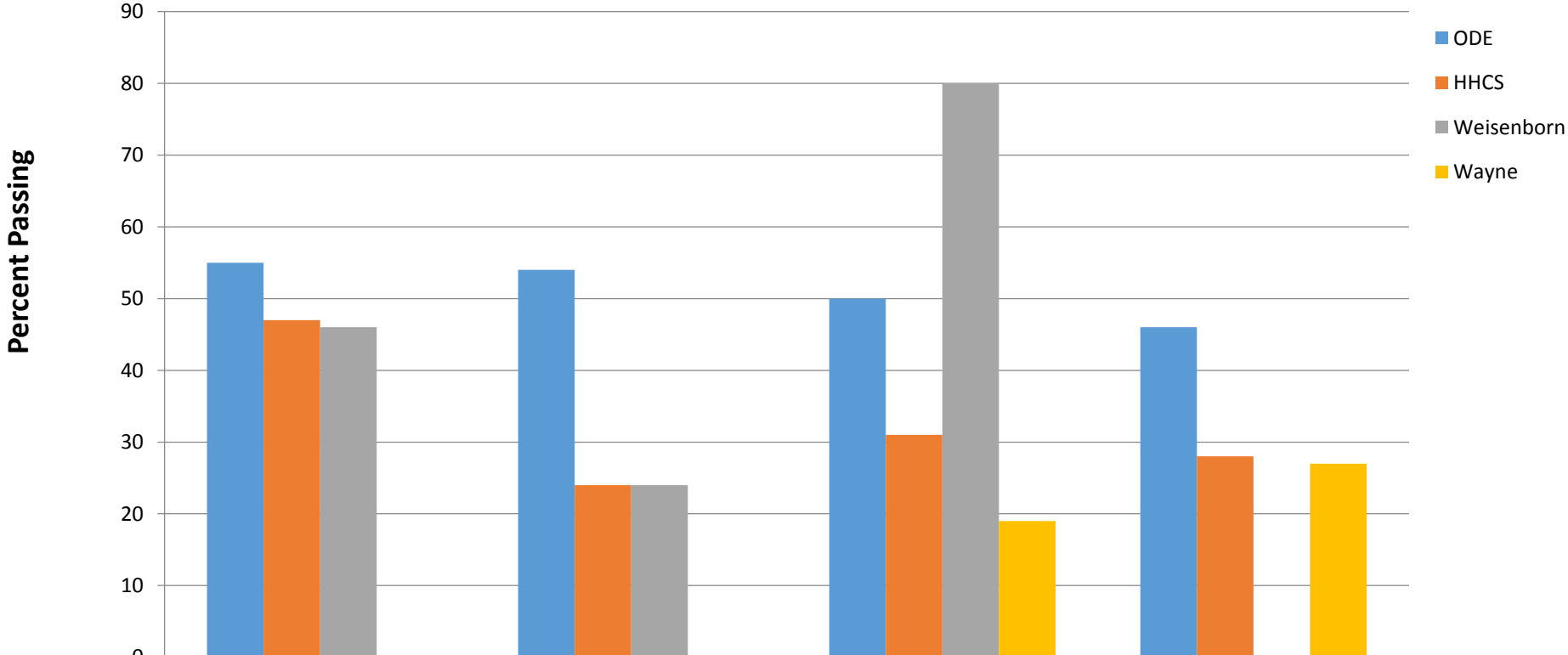
- (3rd) Charles Huber, Valley Forge & Wright Brothers performing above state average
- (4th) Charles Huber & Monticello performing above state average
- (5th) Charles Huber performing above state average

Math Ohio State Test Results - Spring 2017



Grade Level by Building

Math Ohio State Test Results - Spring 2017



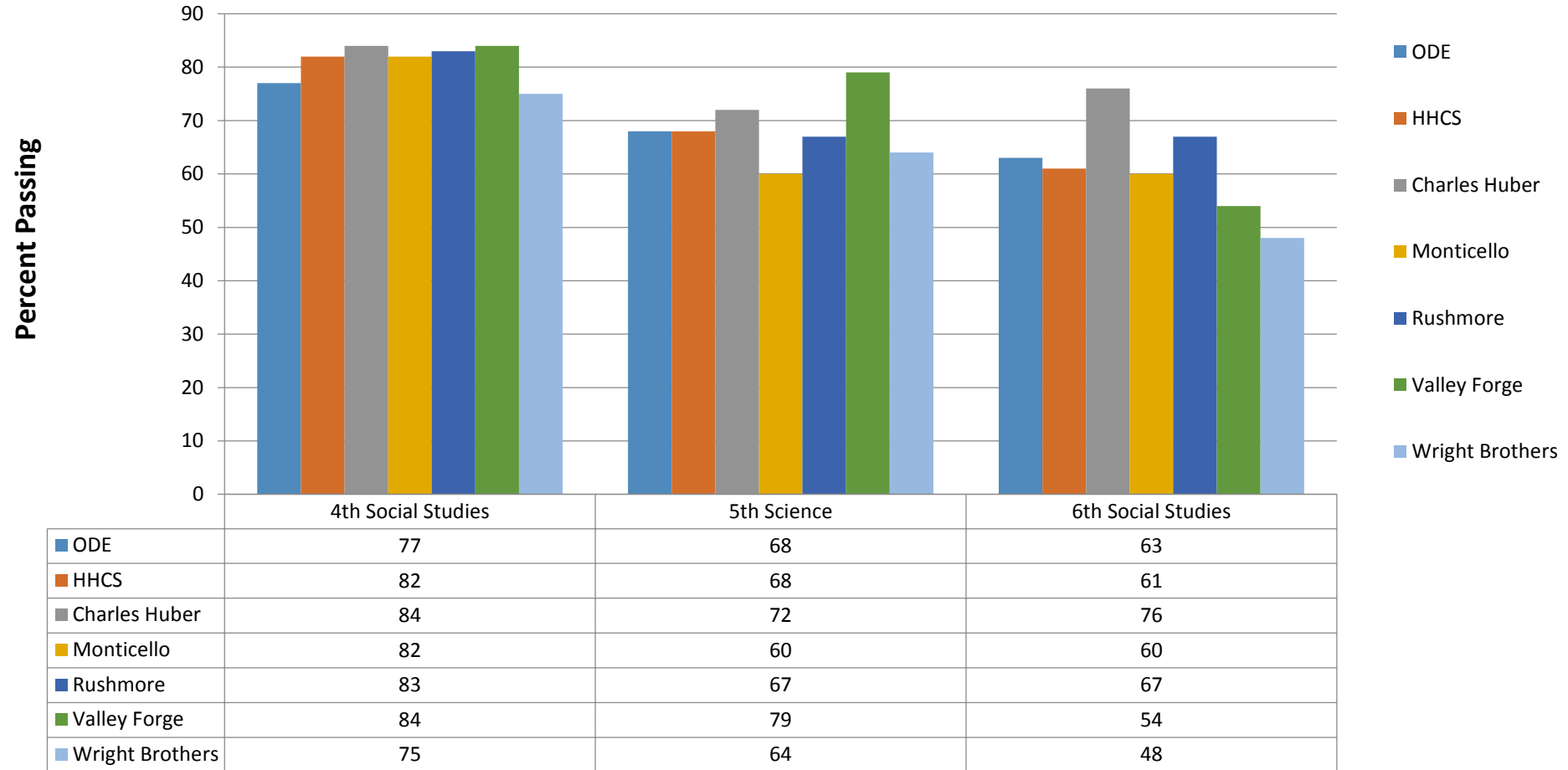
	7th	8th	Alg I	Geometry
ODE	55	54	50	46
HHCS	47	24	31	28
Weisenborn	46	24	80	
Wayne			19	27

Grade Level by Building

Math Comparative Highlights

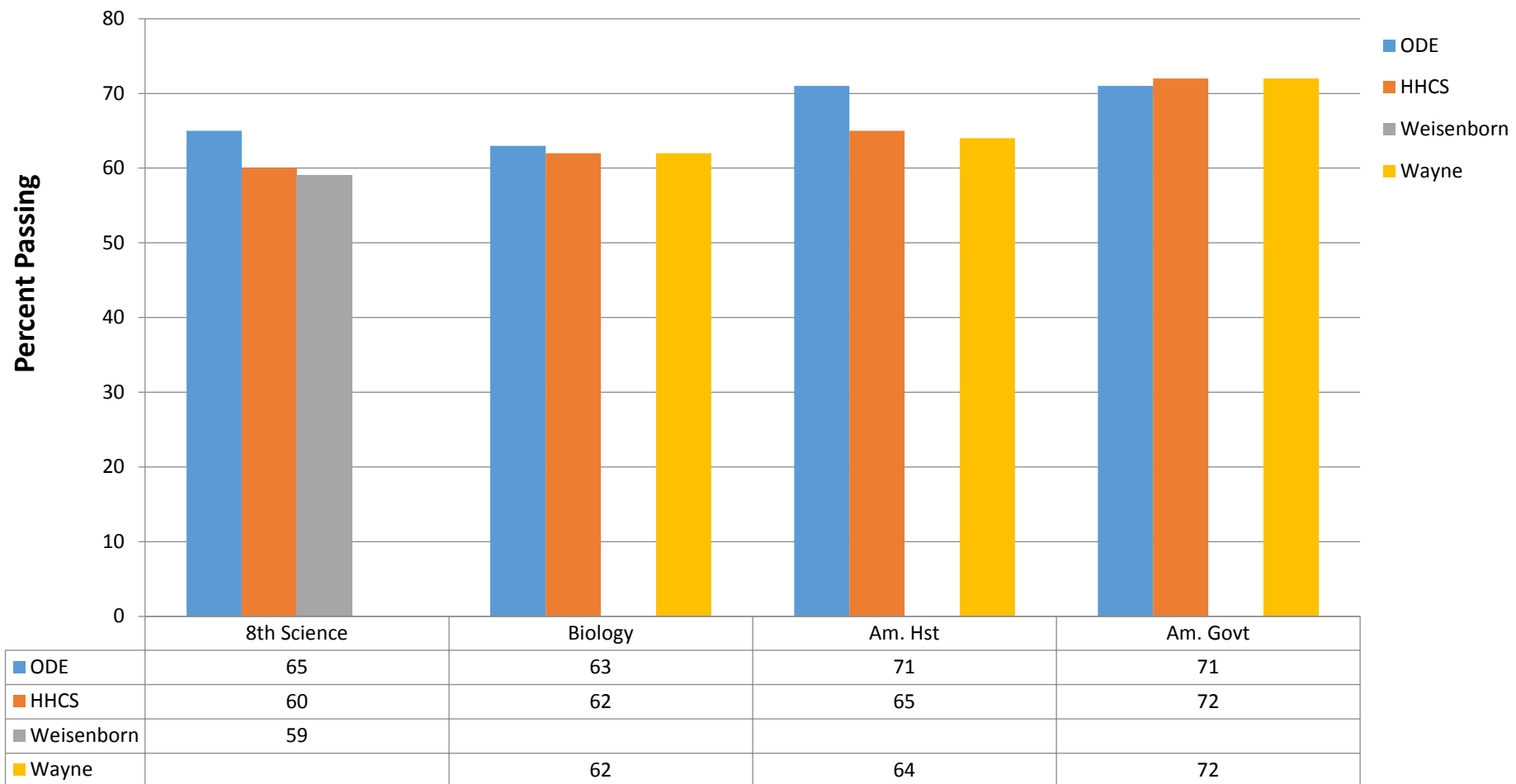
- (3rd) Valley Forge and Wright Brothers exceeded state average
- (4th) Charles Huber exceeded state average
- (6th) Charles Huber and Monticello exceeded state average

Social Studies & Science Ohio State Test Results - Spring 2017



Grade Level by Building

Social Studies & Science Ohio State Test Results - Spring 2017



Grade Level by Building

Social Studies & Science Comparative Highlights

- (4th/Social Studies) Charles Huber, Monticello, Rushmore & Valley Forge exceeded state average
- (5th/Science) Valley Forge exceeded state average
- (6th/Social Studies) Charles Huber and Rushmore exceeded state average
- (Amer Govt) Wayne exceeded state average

Growth Data/ Progress

Overall

This measures the progress for all students in math and reading, grades 4-8.

GRADE	Subgroup	Grade	Progress Score (Gain Index)								
			Reading	Mathematics	Social Studies	Science	All Tests	English I	English II	Algebra I	Geometry
F	Overall	All Grades	-12.52	-2.67	0.20	-6.01	-11.47	--	--	--	--
		4th Grade	0.30	2.20	--	--	1.54	--	--	--	--
		5th Grade	-9.85	4.47	--	-0.19	-3.96	--	--	--	--
		6th Grade	-4.37	6.84	0.20	--	1.02	--	--	--	--
		7th Grade	-5.73	0.39	--	--	-3.82	--	--	--	--
		8th Grade	-4.60	-15.55	--	-8.22	-14.79	--	--	--	--
		High School	--	--	--	--	--	-5.34	3.89	-7.84	-0.34

Gifted Students

This measures the progress for students identified as gifted in reading, math, and/or superior cognitive

GRADE	Subgroup	Grade	Progress Score (Gain Index)								
			Reading	Mathematics	Social Studies	Science	All Tests	English I	English II	Algebra I	Geometry
C	Gifted	All Grades	-1.72	1.69	3.49	0.63	0.76	--	--	--	--
		4th Grade	2.58	-0.07	--	--	1.83	--	--	--	--
		5th Grade	-2.14	2.06	--	1.21	0.36	--	--	--	--
		6th Grade	0.04	1.35	3.49	--	2.24	--	--	--	--
		7th Grade	-2.93	0.78	--	--	-1.63	--	--	--	--
		8th Grade	-2.20	--	--	-0.22	-1.54	--	--	--	--
		High School	--	--	--	--	--	-1.54	2.86	-2.08	0.34

Students in the Lowest 20% of Achievement

This measures the progress for students identified as the lowest 20% statewide in reading and math achievement.

GRADE	Subgroup	Grade	Progress Score (Gain Index)								
			Reading	Mathematics	Social Studies	Science	All Tests	English I	English II	Algebra I	Geometry
C	Lowest 20%	All Grades	-4.38	4.24	0.25	-2.26	0.08	--	--	--	--
		4th Grade	-2.63	3.13	--	--	0.38	--	--	--	--
		5th Grade	-2.67	2.91	--	0.62	0.25	--	--	--	--
		6th Grade	-0.55	4.23	0.25	--	2.00	--	--	--	--
		7th Grade	-2.39	1.22	--	--	-0.89	--	--	--	--
		8th Grade	-1.74	-6.48	--	-3.69	-6.51	--	--	--	--
		High School	--	--	--	--	--	-2.00	2.68	0.18	4.93

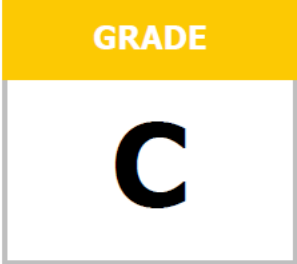
Students with Disabilities

This measures the progress for students with disabilities.

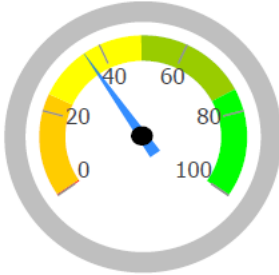
GRADE	Subgroup	Grade	Progress Score (Gain Index)								
			Reading	Mathematics	Social Studies	Science	All Tests	English I	English II	Algebra I	Geometry
C	Students w/ Disabilities	All Grades	-3.65	3.49	0.12	-0.37	-0.62	--	--	--	--
		4th Grade	-3.02	1.71	--	--	-1.07	--	--	--	--
		5th Grade	-0.18	3.37	--	-0.17	1.61	--	--	--	--
		6th Grade	0.61	3.10	0.12	--	2.12	--	--	--	--
		7th Grade	-1.34	0.56	--	--	-0.61	--	--	--	--
		8th Grade	0.88	-2.39	--	-0.35	-0.93	--	--	--	--
		High School	--	--	--	--	--	-4.76	-0.51	-0.40	2.37

K-3 Literacy

Not On-Track at Point A		Improving to On-Track at Point B		
Kindergarten Reading Diagnostic, School Year 2015 - 2016	170	to	1st Grade Reading Diagnostic, School Year 2016 - 2017	76
1st Grade Reading Diagnostic, School Year 2015 - 2016	166	to	2nd Grade Reading Diagnostic, School Year 2016 - 2017	69
2nd Grade Reading Diagnostic, School Year 2015 - 2016	106	to	3rd Grade Reading Diagnostic, School Year 2016 - 2017	33
3rd Grade Reading Diagnostic, School Year 2016 - 2017	118	to	3rd Grade Reading OST, School Year 2016 - 2017	25
Deduction for 3rd graders who did not pass OST and were not on a Reading Improvement and Monitoring Plan			1	
Totals	560			202



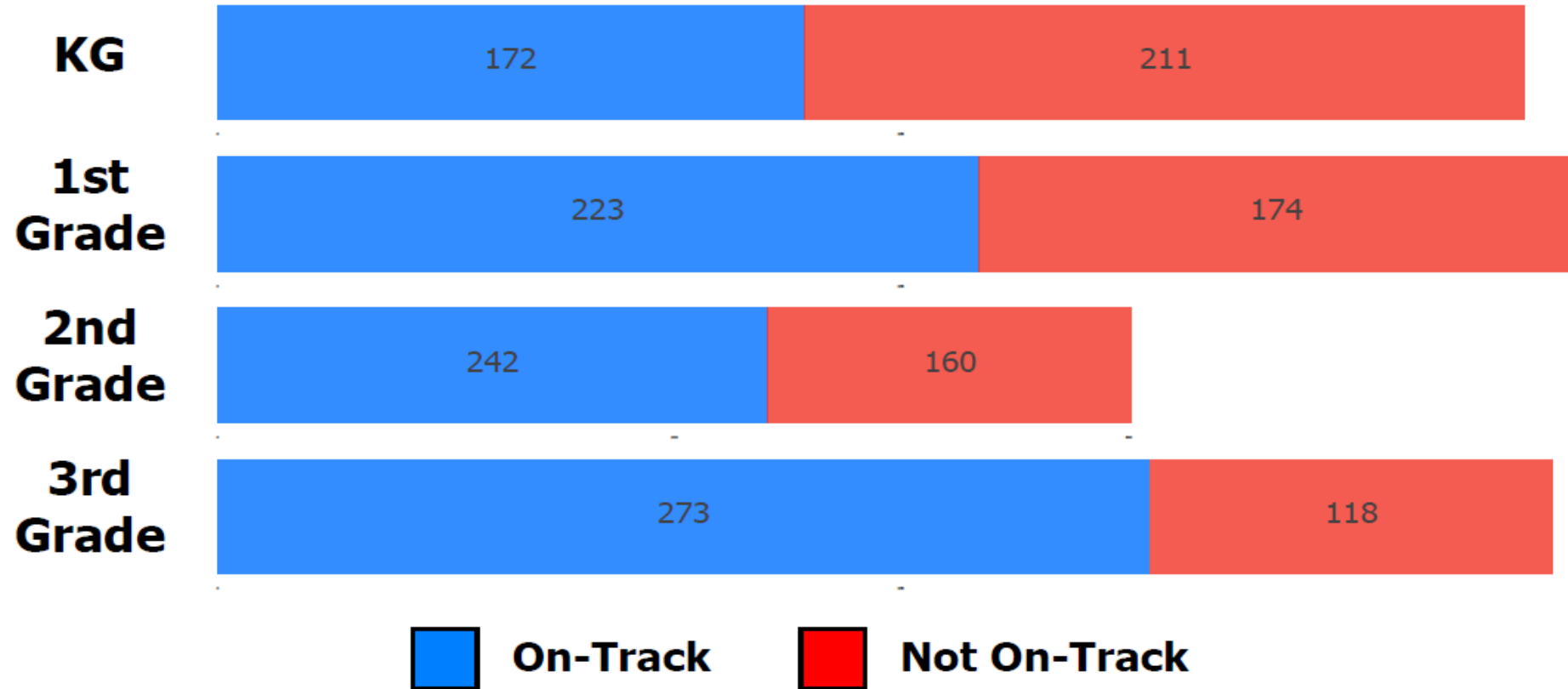
K-3 Literacy



36.1%
202 out of 560

Students On-Track in Reading Diagnostic

This chart shows the overall percentage of students that were on-track/not-on-track for each grade reading diagnostic in 2016-2017.



4-Year Graduation Rate

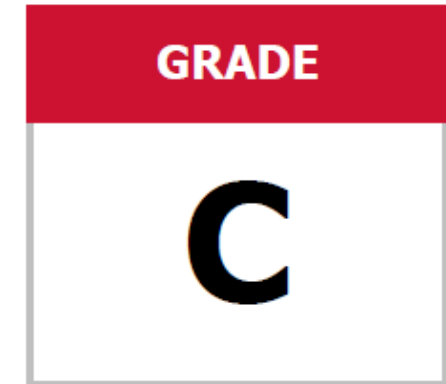
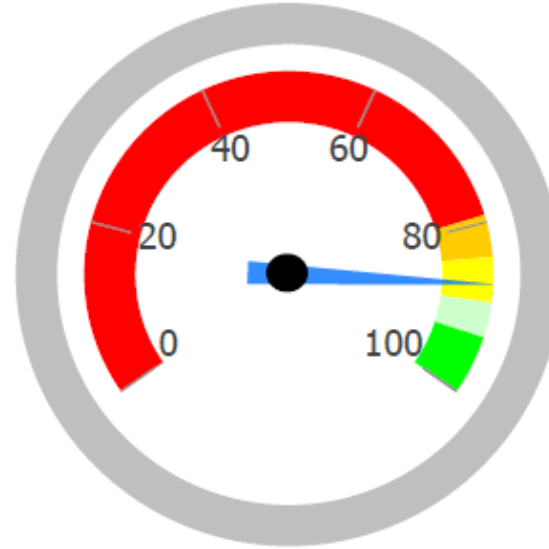
The 4-year graduation rate applies to the Class of 2016 who graduated within four years, i.e. students who entered the 9th grade in 2013 and graduated by 2016.

**Class of 2016
Graduates:**
411

**Students
Countable in
Class of 2016**
472

Graduation Rate:

87.1



A = 93.0 - 100.0%
B = 89.0 - 92.9%
C = 84.0 - 88.9%
D = 79.0 - 83.9%
F = 0.0 - 78.9%

5-Year Graduation Rate

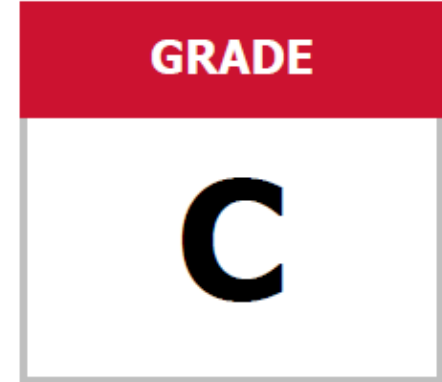
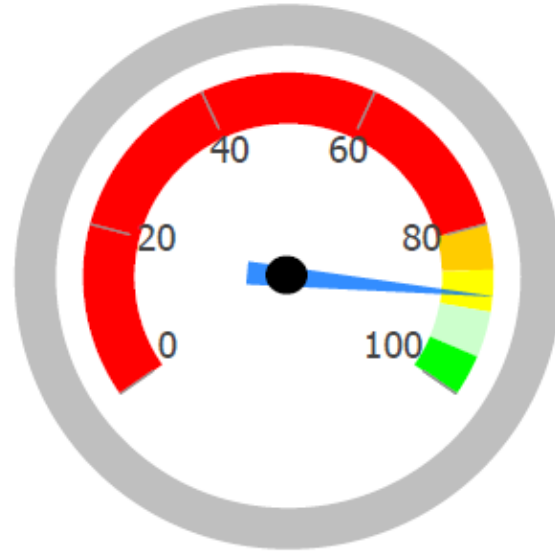
The 5-year graduation rate applies to the Class of 2015 who graduated within five years, i.e. students who entered the 9th grade in 2012 and graduated by 2016.

**Class of 2015
Graduates:**
411

**Students
Countable in
Class of 2015**
466

Graduation Rate:

88.2



- A = 95.0 - 100.0%
- B = 90.0 - 94.9%
- C = 85.0 - 89.9%
- D = 80.0 - 84.9%
- F = 0.0 - 79.9%

Gifted Indicator Final Result

The Gifted Indicator is Met if none of the three components are Not Met. Gifted Inputs alone cannot determine the Gifted Indicator, however; if both the Value Added and Performance Index components are NC, then the Gifted Indicator is also NC.

INDICATOR
Not Met

Value Added Met?:

Met

Performance Index Met?:

Not Met

Gifted Inputs Met?:

Not Met

Value-Added Comparison Chart 2015-17

Building	Subgroup	Index 2017	Index 2016	Value-Added 2017	Value-Added Grade 2016	Value-Added Grade 2015
Huber Heights	Gifted	0.76	1.17	C	B	D
	Lowest 20%	0.08	1.04	C	B	F
	Overall	-11.47	-5.18	F	F	F
	SWD	-0.62	0.51	C	C	F
Charles Huber	Gifted	-0.2	-1.38	C	D	B
	Lowest 20%	-0.11	0.9	C	C	C
	Overall	-0.99	-0.26	C	C	B
	SWD	-0.1	0.89	C	C	C
Monticello	Gifted	0.29		C		C
	Lowest 20%	2.77	1.47	A	B	D
	Overall	2.33	0.8	A	C	C
	SWD	1.83	0.36	B	C	C
Rushmore	Gifted	0.23		C		C
	Lowest 20%	0.21	-0.46	C	C	C
	Overall	-1.03	-0.41	D	C	C
	SWD	1.07	0.85	B	C	F

Building	Subgroup	Index 2017	Index 2016	Value-Added 2017	Value-Added Grade 2016	Value-Added Grade 2015
Valley Forge	Gifted					F
	Lowest 20%	1.39	1.08	B	B	F
	Overall	-2.33	-1.03	F	D	F
	SWD	1.49	0.47	B	C	C
Wright Brothers	Gifted	-1.61		D		F
	Lowest 20%	0.98	2.46	C	A	F
	Overall	3.45	5.91	A	A	F
	SWD	0.99	1.03	C	B	D
Weisenborn Junior High	Gifted	-3.18	-3.11	F	F	C
	Lowest 20%	-5.49	-3.27	F	F	F
	Overall	-14.63	-10.53	F	F	F
	SWD	-1.08	0.78	D	C	F
Wayne High School	Gifted	1.85	2.72	B	A	
	Lowest 20%	1.87	1.54	B	B	
	Overall	-3.73	0.18	F	C	
	SWD	-2.7	-1.87	F	D	

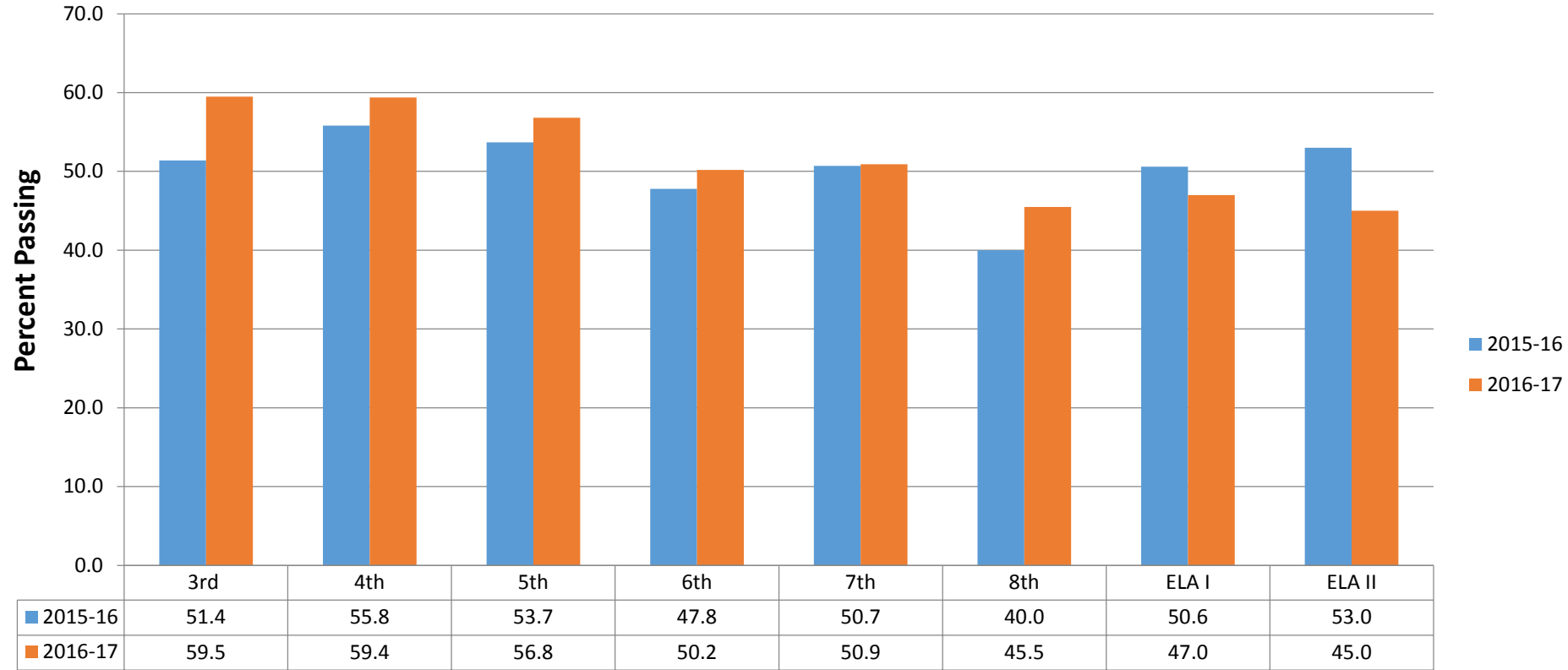
Comparison 2017 vs. 2016

Component	2017	2016
K-3 Literacy	C	F
Performance Index	D	D
Graduation Rate	C/C	C/C
Performance Index Score	65.4%	63.2%

ELA Achievement Results

Exam	2016 Results	2017 Results
Grade 3 ELA	51.4%	59.5%
Grade 4 ELA	55.8%	59.4%
Grade 5 ELA	53.7%	56.8%
Grade 6 ELA	47.8%	50.2%
Grade 7 ELA	50.7%	50.9%
Grade 8 ELA	40.0%	45.5%
ELA I	50.6%	47%
ELA II	53.0%	45%

ELA Spring 2016 - Spring 2017 Comparison



Grade Level/Subject

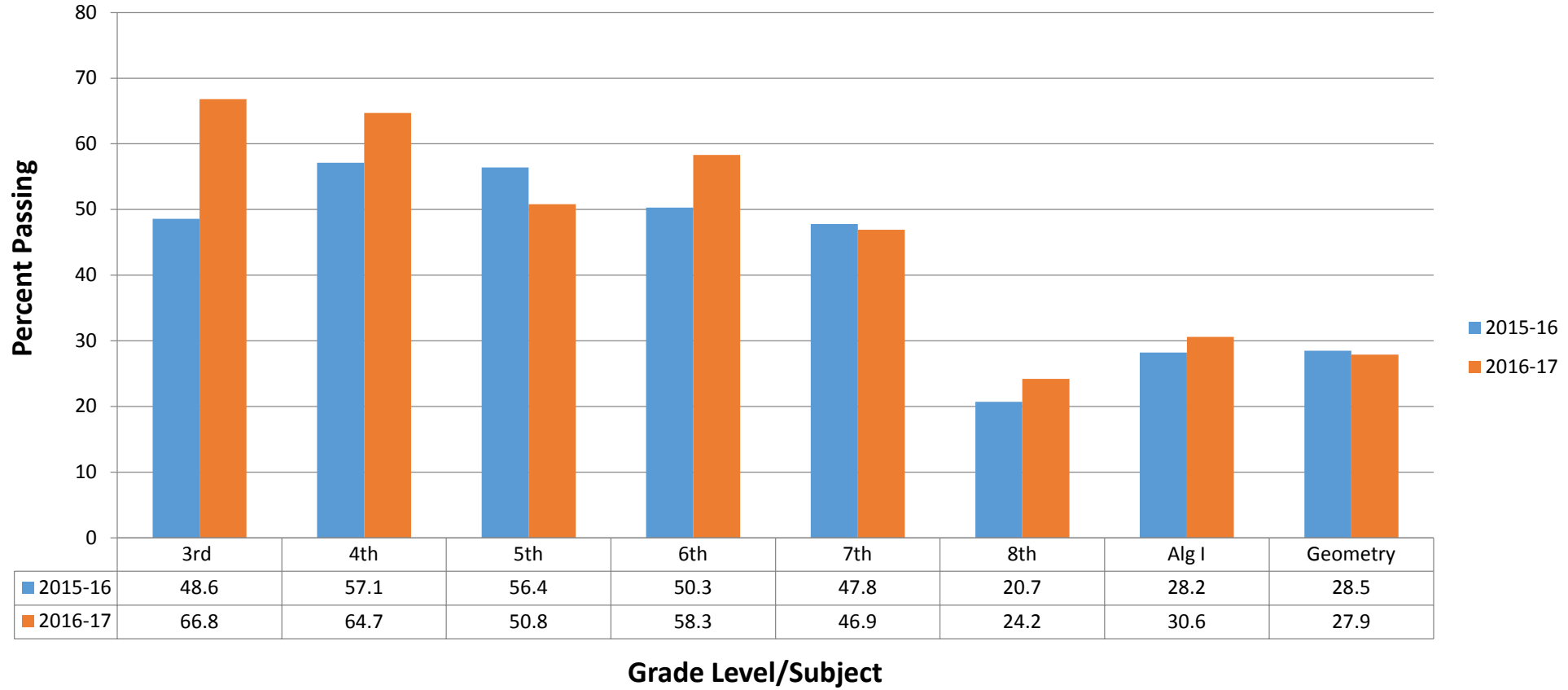
ELA Highlights

- 3rd increase of 8.1%
- 4th increase of 3.6%
- 5th increase of 3.1%
- 6th increase of 2.4%
- 7th increase of 0.2%
- 8th increase of 5.5%

Math Achievement Results

Exam	2016 Results	2017 Results
Grade 3 Math	48.6%	66.8%
Grade 4 Math	57.1%	64.7%
Grade 5 Math	56.4%	50.8%
Grade 6 Math	50.3%	58.3%
Grade 7 Math	47.8%	46.9%
Grade 8 Math	20.7%	24.2%
Algebra I	28.2%	30.6%
Geometry	28.5%	27.9%

Math Spring 2016 - Spring 2017 Comparison



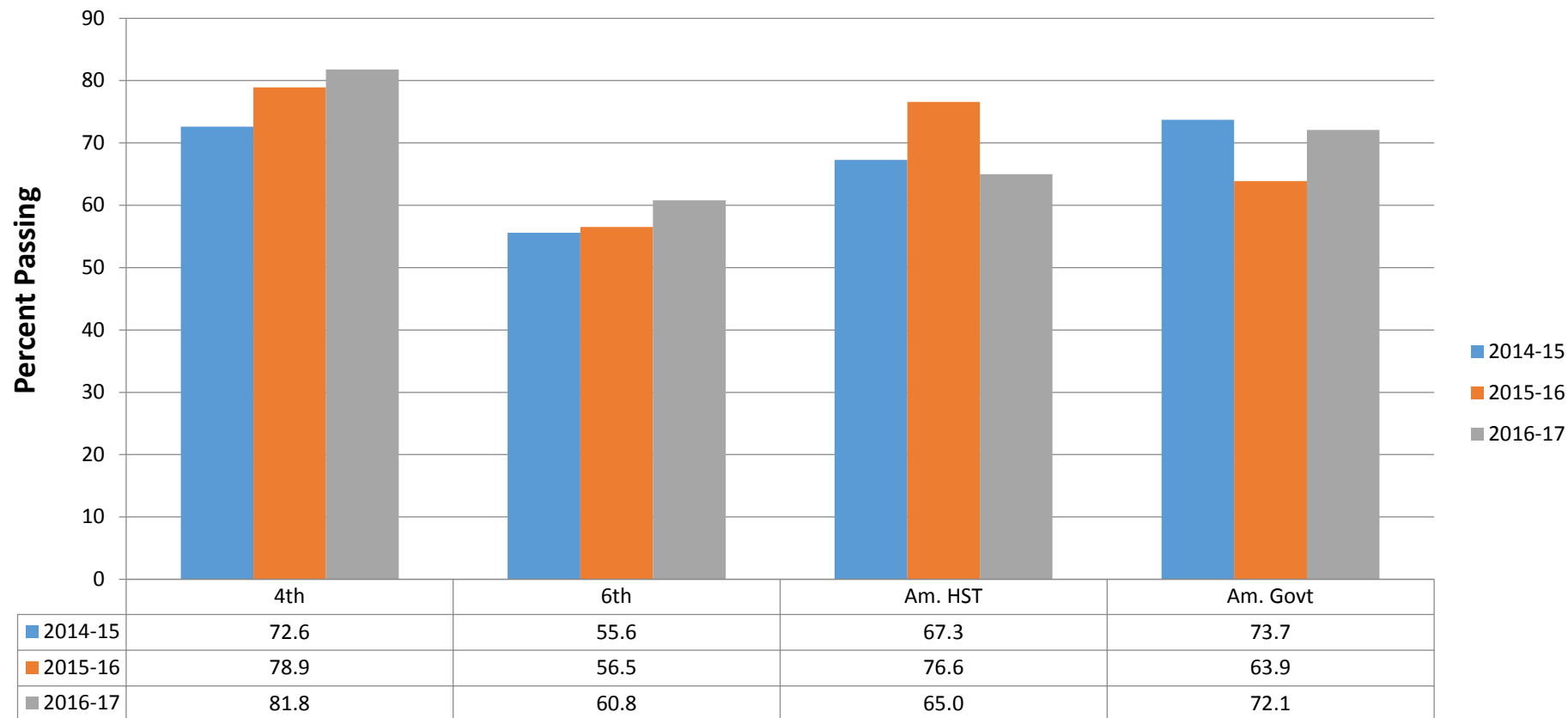
Math Highlights

- 3rd increase of 18.2%
- 4th increase of 7.6%
- 6th increase of 8%
- 8th increase of 3.5%
- Alg I increase of 2.4%

Science & Social Studies Achievement Results

Exam	2016 Results	2017 Results
Grade 5 Science	70.0%	67.6%
Grade 8 Science	52.3%	60.3%
Biology	27.9%	62.4%
Grade 4 Social St.	78.9%	81.8%- Indicator Met
Grade 6 Social St.	56.5%	60.8%
Am. History	76.6%	65%
Am. Government	63.9%	72.1%

Social Studies Spring 2015 - Spring 2017 Comparison

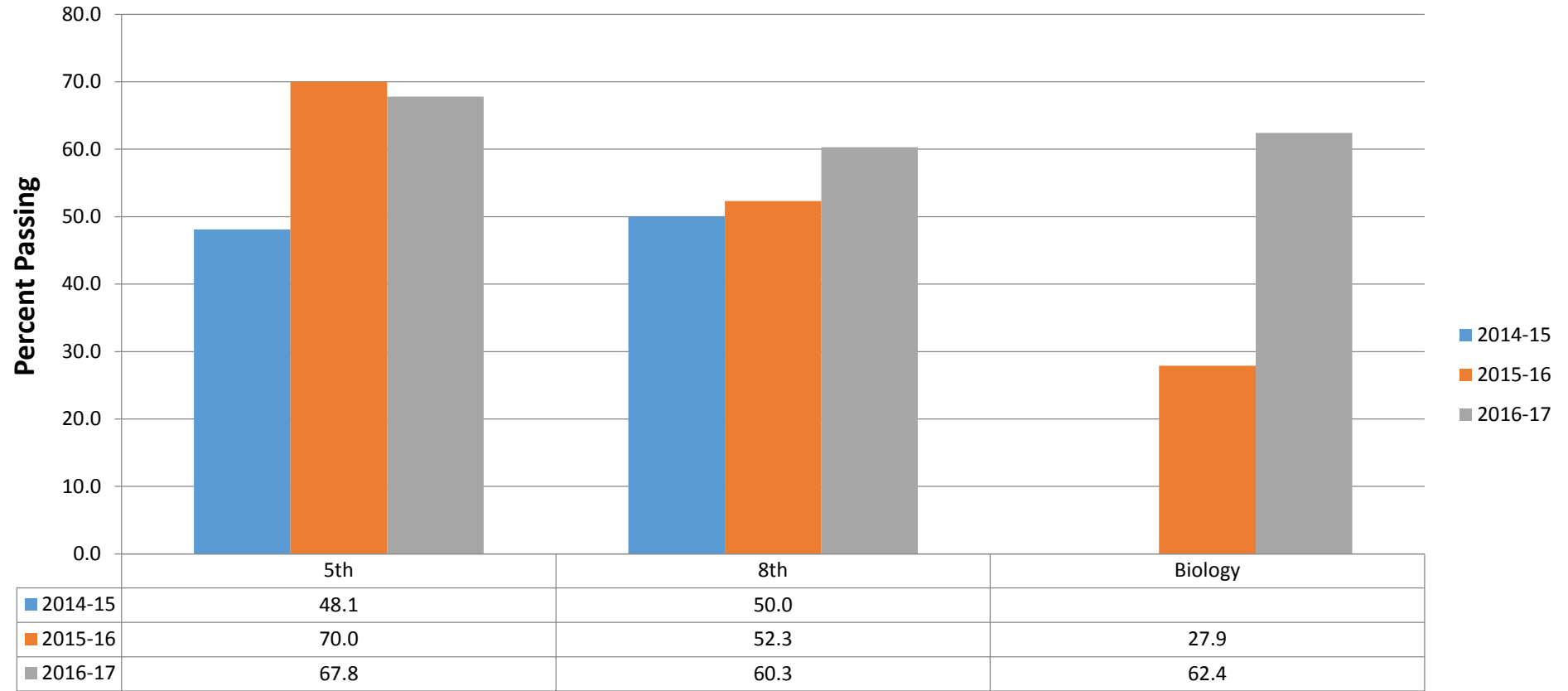


Grade Level/Subject

Social Studies Highlights

- 4th increase of 2.9%
- 6th increase of 4.3%
- American Government increase of 8.2%

Science Spring 2015 - Spring 2017 Comparison



Grade Level/Subject

Science Highlights

- 8th increase of 8%
- Biology increase of 34.8%

We Believe...

Although the new tests reflect higher achievement targets and more challenging expectations, Huber Heights City Schools is committed to continuously improving the quality of education provided to students. This improvement will be evidenced in the school and district report card.

- The report card is one measure of teacher, school, and district performance.*
- The report card is a meaningful measure of academic outcomes. There are celebrations and areas that we will continue to focus on.*
- The report card will inform our instruction, but will not define us (or our children).*