

2018 All Grades for Charles Huber Elementary School

IRN: 064618
 School Type: Elementary School
 Address: 8895 Emeraldgate Dr
 Huber Heights, OH 45424-6410

District: Huber Heights City
 County: Montgomery
 ITC: MVECA



Achievement

The Achievement component represents the number of students who passed the state tests and how well they performed on them.

Performance Index
 73.6%..... C
 Indicators Met
 18.2%..... F

[VIEW MORE DATA](#)

[VIEW GIFTED DATA](#)

COMPONENT GRADE

D

COMPONENT POINTS

2.000



Progress

The Progress component looks closely at the growth that all students are making based on their past performances.

Value-Added
 Overall..... A
 Gifted..... C
 Lowest 20%1yr Achievement..... B
 Students with Disabilities..... C

[VIEW MORE DATA](#)

COMPONENT GRADE

B

COMPONENT POINTS

4.250



Gap Closing

The Gap Closing component shows how well schools are meeting the performance expectations for our most vulnerable populations of students in English language arts, math and graduation.

Annual Measurable Objectives
 83.3%..... B

[VIEW MORE DATA](#)

COMPONENT GRADE

B

COMPONENT POINTS

3.500



Graduation Rate

The Graduation Rate component looks at the percent of students who are successfully finishing high school with a diploma in four or five years.

Graduation Rates
 0.0% of students graduated in 4 years..... NR
 0.0% of students graduated in 5 years..... NR

[VIEW MORE DATA](#)

COMPONENT GRADE

NR

COMPONENT POINTS

0.000



Improving At-Risk K-3 Readers

The K-3 Literacy component looks at how successful the school is at getting struggling readers on track to proficiency in third grade and beyond.

K-3 Literacy Improvement
 40.9%..... C

[VIEW MORE DATA](#)

COMPONENT GRADE

C

COMPONENT POINTS

2.500



Prepared for Success

Whether training in a technical field or preparing for work or college, the Prepared for Success component looks at how well prepared Ohio's students are for all future opportunities.

[VIEW DATA](#)

COMPONENT GRADE

NR

COMPONENT POINTS

0.000

Component	Component Points	Component Weight	Weighted Points
Achievement Points:	2,000	x 27.50%	= 0.550
Progress Points:	4,250	x 27.50%	= 1.169
Gap Closing Points:	3,500	x 22.50%	= 0.788
Graduation Rate Points:	0,000	x 0.00%	= 0.000
K-3 Literacy Points:	2,500	x 22.50%	= 0.563
Prepared for Success Points:	0,000	x 0.00%	= 1.169



Overall Points: 3.069

FINAL GRADE

C

A = 4.125 - 5.000
 B = 3.125 - 4.124
 C = 2.125 - 3.124
 D = 1.125 - 2.124
 F = 0.000 - 1.124

[Click here](#) to see the Secure Data Center - Status of Reports report.

2018 Progress Data for Charles Huber Elementary School

IRN: 064618
 School Type: Elementary School
 Address: 8895 Emeraldgate Dr
 Huber Heights, OH 45424-6410

District: Huber Heights City
 County: Montgomery
 ITC: MVECA

Overall

This measures the progress for all students in math and reading, grades 4-8.

GRADE
A

Subgroup	Grade	Progress Score (Gain Index)				
		Overall Composite	Social Studies	English Language Arts	Mathematics	Science
Overall	4th Grade	3.5		0.8	4.9	
	5th Grade	-2.3		-2.1	-4.8	3.7
	6th Grade	3.2	2.6	-2.1	6.7	
	Composite Grades	2.3	2.6	-2.4	4.8	3.7

Gifted Students

This measures the progress for students identified as gifted in reading, math, and/or superior cognitive ability.

GRADE
C

Subgroup	Grade	Progress Score (Gain Index)			
		Overall Composite	Social Studies	English Language Arts	Mathematics
Gifted	4th Grade	0.1			0.1
	5th Grade	-1.2		0.9	-3.0
	6th Grade	1.5	3.0	-0.9	2.7
	Composite Grades	0.0	3.0	0.0	-0.6

Students in the Lowest 20% of Achievement

This measures the progress for students identified as the lowest 20% statewide in reading and math achievement.

GRADE
B

Subgroup	Grade	Progress Score (Gain Index)				
		Overall Composite	Social Studies	English Language Arts	Mathematics	Science
Low 20	4th Grade	0.7		-0.7	1.9	
	5th Grade	-0.8		-1.7	-0.0	0.9

Subgroup	Grade	Progress Score (Gain Index)				
		Overall Composite	Social Studies	English Language Arts	Mathematics	Science
Low 20	6th Grade	2.1	2.2	-0.3	2.8	
	Composite Grades	1.2	2.2	-1.9	3.3	0.9

Students with Disabilities

This measures the progress for students with disabilities.

GRADE
C

Subgroup	Grade	Progress Score (Gain Index)				
		Overall Composite	Social Studies	English Language Arts	Mathematics	Science
SWD	4th Grade	-0.1		-0.5	0.5	
	5th Grade	1.2		-1.1	2.5	1.0
	6th Grade	-0.3	0.6	-1.7	1.1	
	Composite Grades	0.5	0.6	-2.1	2.8	1.0

Progress Component Grade

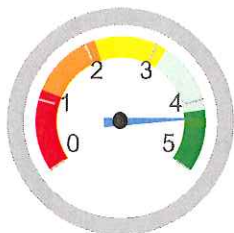
Points are assigned to assigned to the Overall, Gifted, Lowest 20%, and Students with Disabilities Value Added grades.

- A = 5 points
- B = 4 points
- C = 3 points
- D = 2 points
- F = 1 point

The weighting for each subgroup's points varies depending on how many subgroups were graded.

If you have this many subgroups	Then the "Overall" subgroup is weighted	And the other subgroups are weighted
4	55%	15%
3	63.25%	18.375%
2	71.5%	28.5%
1	100%	N/A

Subgroup	Grade	Points	Weight	Final Points
Overall	A	5	55.000%	2.750
Gifted	C	3	15.000%	0.450
Lowest 20%	B	4	15.000%	0.600
Students w/ Disab	C	3	15.000%	0.450
Total Points				4.250



Grade Scale:

- A = 4.125 - 5.000
- B = 3.125 - 4.124
- C = 2.125 - 3.124
- D = 1.125 - 2.124
- F = 0.000 - 1.124

GRADE
B

Note: If any subgroup grade is C, D, or F, then the final grade can be no higher than B.

[Click here](#) to see the Secure Data Center - Status of Reports report

Systems, Structures and Adoptions in Place to Sustain and Stimulate Growth:

- Common Formative Assessments
- K-8th Grade Math Textbook Adoption
- Professional Development Days
- K-6th Grade Half Day Math Collaborative Meetings
- 7th-8th Grade Embedded Math Professional Development (Instructional Coaching)
- 3rd Grade Fall Tutoring
- Additional planning meetings (junior high and high school)

Part of the story...

Report Cards are only one part of the story of what is happening in a district or school. To get a fuller picture, visit schools, talk to teachers, administrators, parents and students, and visit the school's or district's webpage. A lot of great things are happening every day.

