

Huber Heights City Schools District Report Card Data Overview

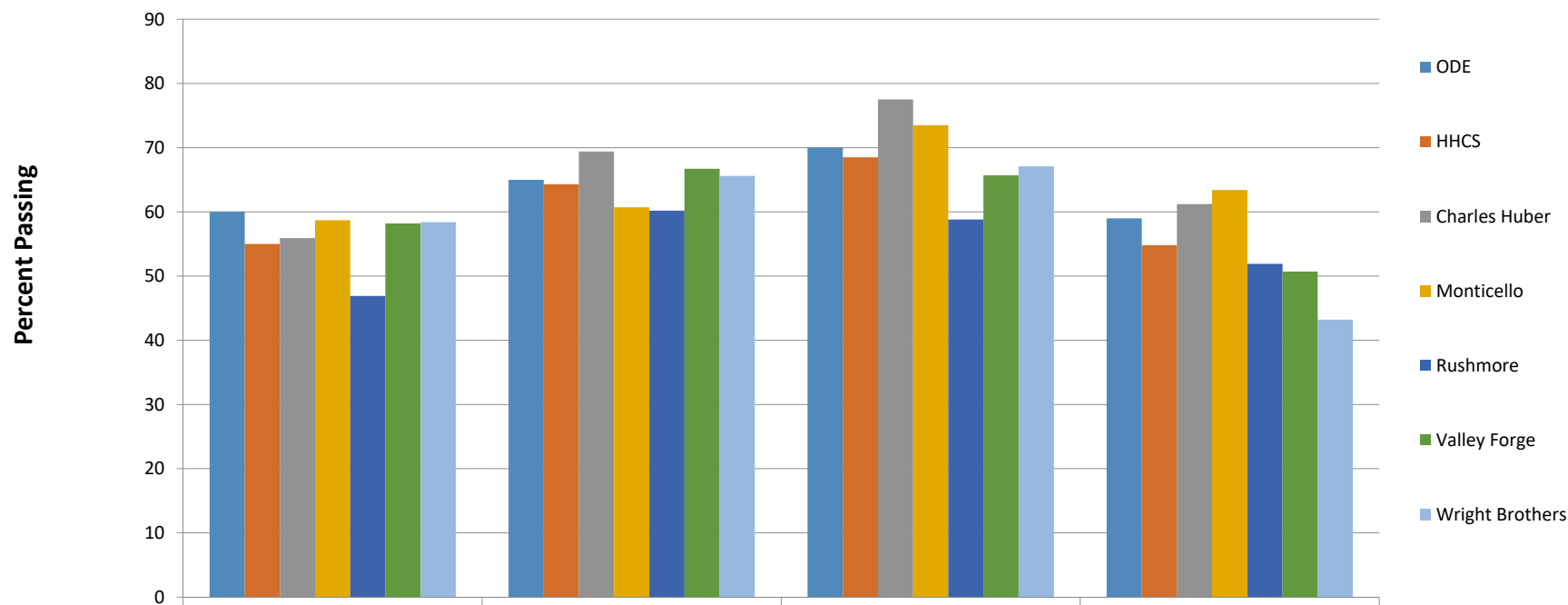
2018



September Report:

- 2018 Achievement (Comparison to State)
- Report Card Data
- Comparison of School Years

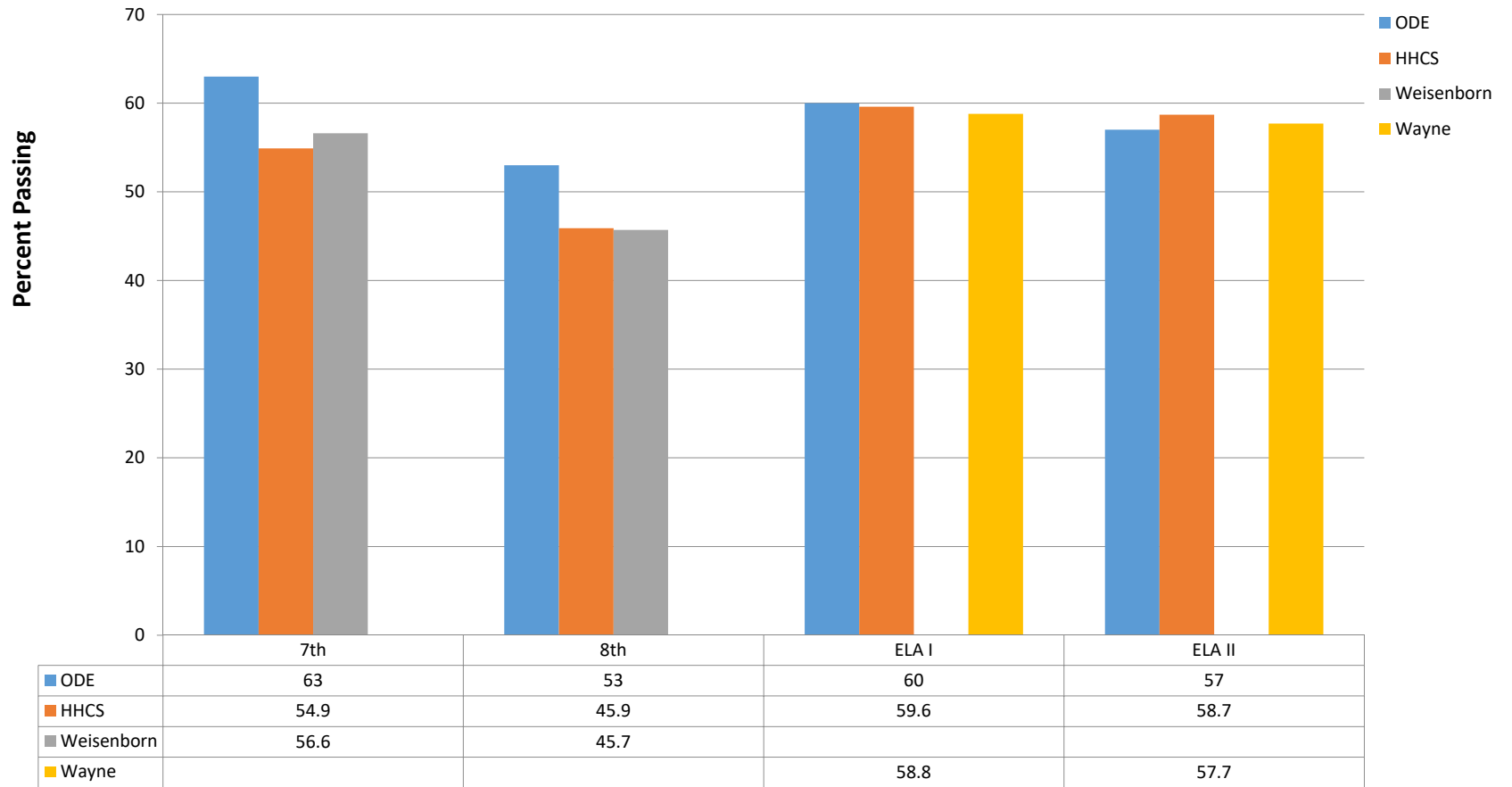
ELA Ohio State Test Results - Spring 2018



	3rd	4th	5th	6th
ODE	60	65	70	59
HHCS	55	64.3	68.5	54.8
Charles Huber	55.9	69.4	77.5	61.2
Monticello	58.7	60.7	73.5	63.4
Rushmore	46.9	60.2	58.8	51.9
Valley Forge	58.2	66.7	65.7	50.7
Wright Brothers	58.4	65.6	67.1	43.2

Grade Level by Building

ELA Ohio State Test Results - Spring 2018



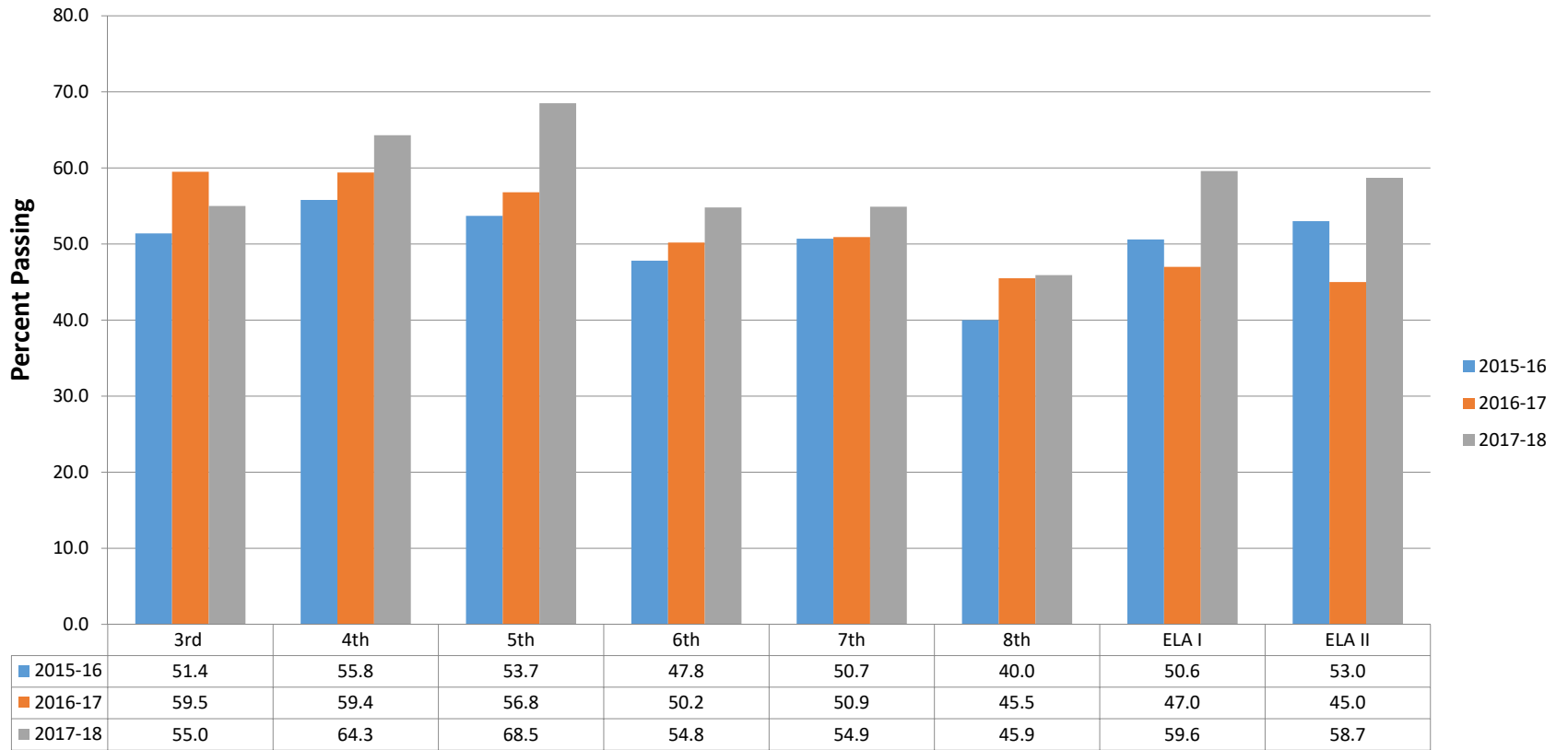
Grade Level by Building

ELA Comparative Highlights

Performing at/above the state average:

- (4th grade) Charles Huber, Valley Forge & Wright Brothers
- (5th grade) Charles Huber & Monticello
- (6th grade) Charles Huber & Monticello
- (ELA I) Wayne

ELA Spring 2016 - Spring 2018 Comparison



Grade Level/Subject

ELA Achievement Results Comparison of 2018 to 2016

Exam	2018 Results	2017 Results	2016 Results
Grade 3 ELA	55%	59.5%	51.4%
Grade 4 ELA	64.3%	59.4%	55.8%
Grade 5 ELA	68.5%	56.8%	53.7%
Grade 6 ELA	54.8%	50.2%	47.8%
Grade 7 ELA	54.9%	50.9%	50.7%
Grade 8 ELA	45.9%	45.5%	40.0%
ELA I	59.6%	47%	50.6%
ELA II	58.7%	45%	53.0%

Trends: ELA 3rd-6th Grade Growth (2017-2018)

	ODE		HHCS		Charles Huber		Monticello		Rushmore		Valley Forge		Wright Brothers	
	2018	2017	2018	2017	2018	2017	2018	2017	2018	2017	2018	2017	2018	2017
3rd	60	63	55	60	55.9	64	58.7	61	46.9	46	58.2	65	58.4	65
4th	65	63	64.3	59	69.4	66	60.7	66	60.2	46	66.7	59	65.6	60
5th	70	67	68.5	57	77.5	75	73.5	59	58.8	49	65.7	52	67.1	49
6th	59	60	54.8	50	61.2	57	63.4	57	51.9	50	50.7	47	43.2	38

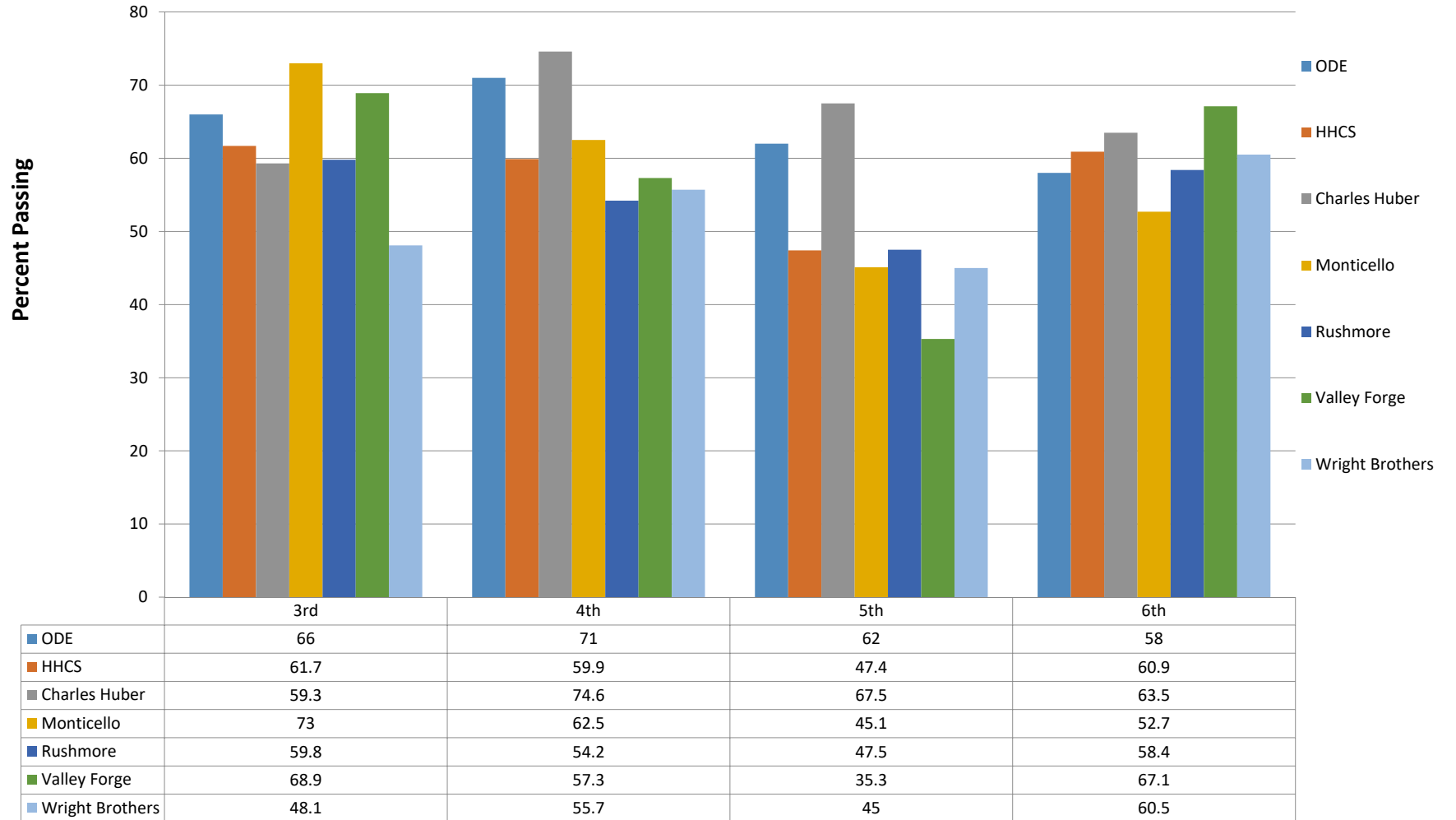
Compares achievement results of the same group of students as they progress from one grade to the next)

Trends: ELA 7th-ELA I Grade Growth (2017-2018)

	ODE		HHCS		Weisenborn		Wayne	
	2018	2017	2018	2017	2018	2017	2018	2017
7th	63	59	56.9	51	56.6	50		
8th	53	50	45.9	45	45.7	45		
ELA I	60	63	59.6	47			58.8	46
ELA II	57	59	58.7	45			57.7	44

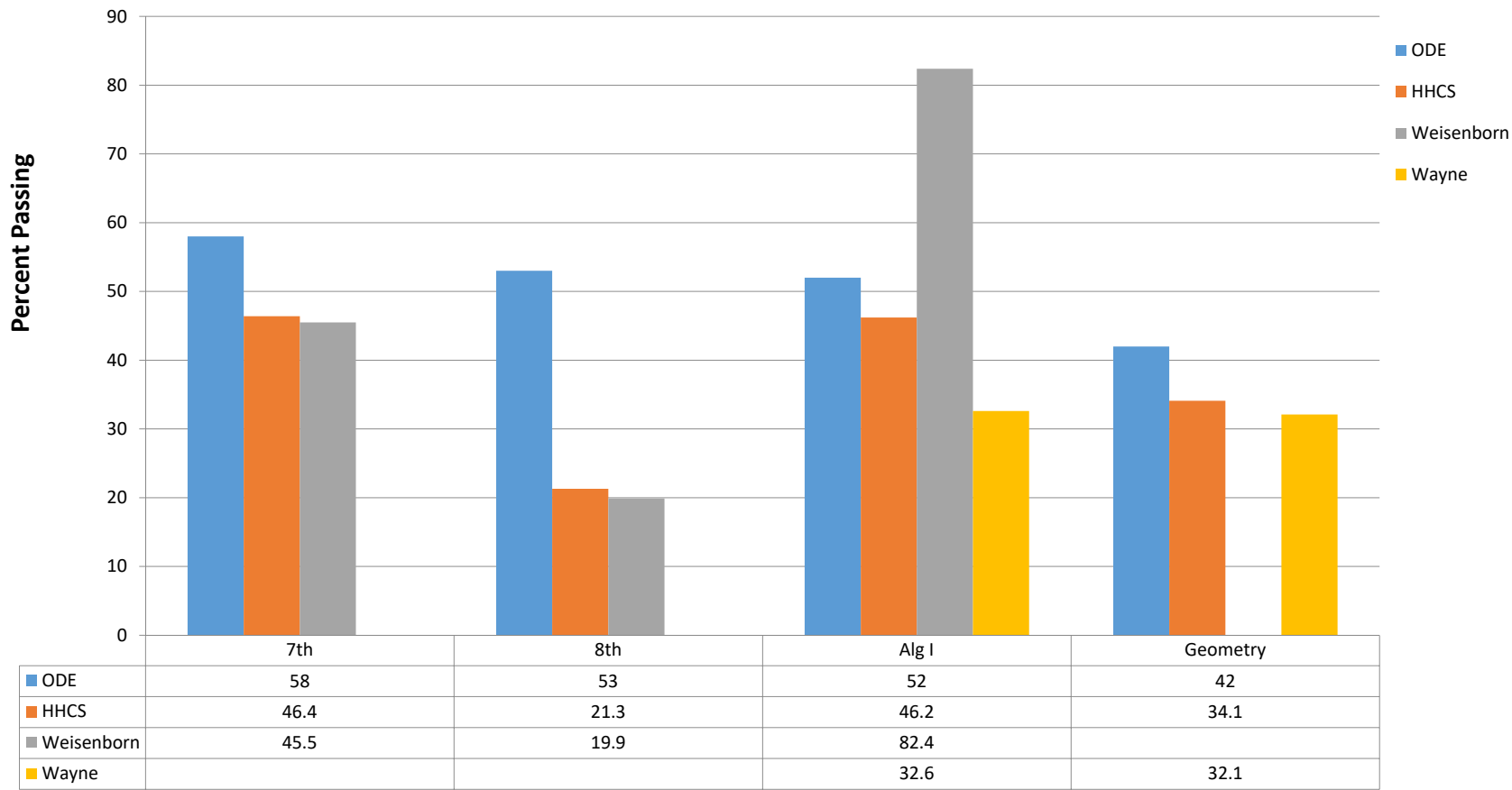
Compares achievement results of the same group of students as they progress from one grade to the next)

Math Ohio State Test Results - Spring 2018



Grade Level by Building

Math Ohio State Test Results - Spring 2018



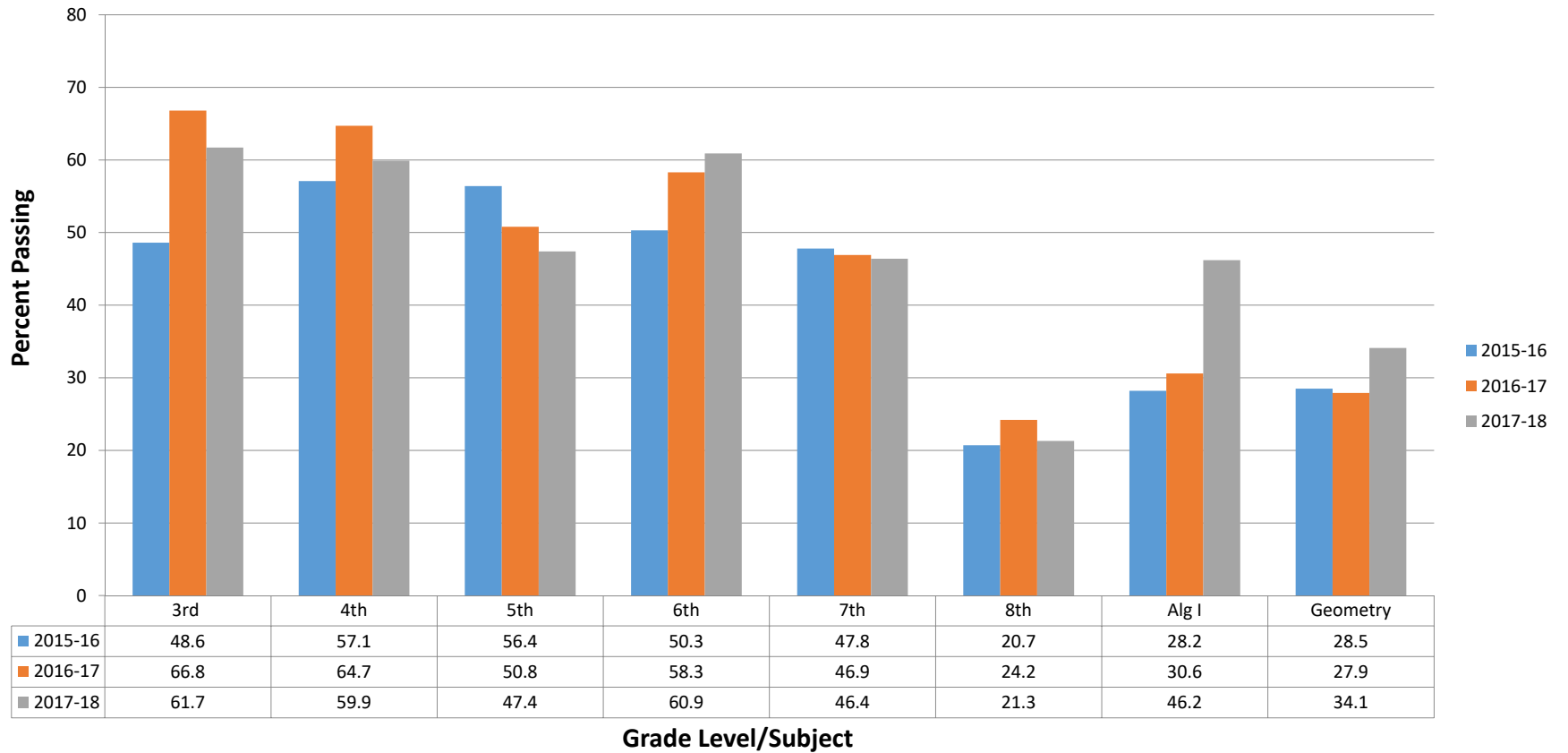
Grade Level by Building

Math Comparative Highlights

Performing at/above the state average:

- (3th grade) Monticello & Valley Forge
- (4th grade) Charles Huber
- (5th grade) Charles Huber
- (6th grade) All Five Elementary Buildings

Math Spring 2016 - Spring 2018 Comparison



Math Achievement Results Comparison of 2018 to 2016

Exam	2018 Results	2017 Results	2016 Results
Grade 3 Math	61.7%	66.8%	48.6%
Grade 4 Math	59.9%	64.7%	57.1%
Grade 5 Math	47.4%	50.8%	56.4%
Grade 6 Math	60.9%	58.3%	50.3%
Grade 7 Math	46.4%	46.9%	47.8%
Grade 8 Math	21.3%	24.2%	20.7%
Algebra I	46.2%	30.6%	28.2%
Geometry	34.1%	27.9%	28.5%

Trend: Math 3rd-6th Grade Growth (2017-2018)

	ODE		HHCS		Charles Huber		Monticello		Rushmore		Valley Forge		Wright Brothers	
	2018	2017	2018	2017	2018	2017	2018	2017	2018	2017	2018	2017	2018	2017
3rd	66	70	61.7	67	59.3	66	73	69	59.8	54	68.9	76	48.1	71
4th	71	72	59.9	65	74.6	73	62.5	70	54.2	61	57.3	46	55.7	70
5th	62	61	47.4	51	67.5	56	45.1	53	47.5	51	35.3	43	45	51
6th	58	60	60.9	58	63.5	65	52.7	62	58.4	54	67.1	58	60.5	51

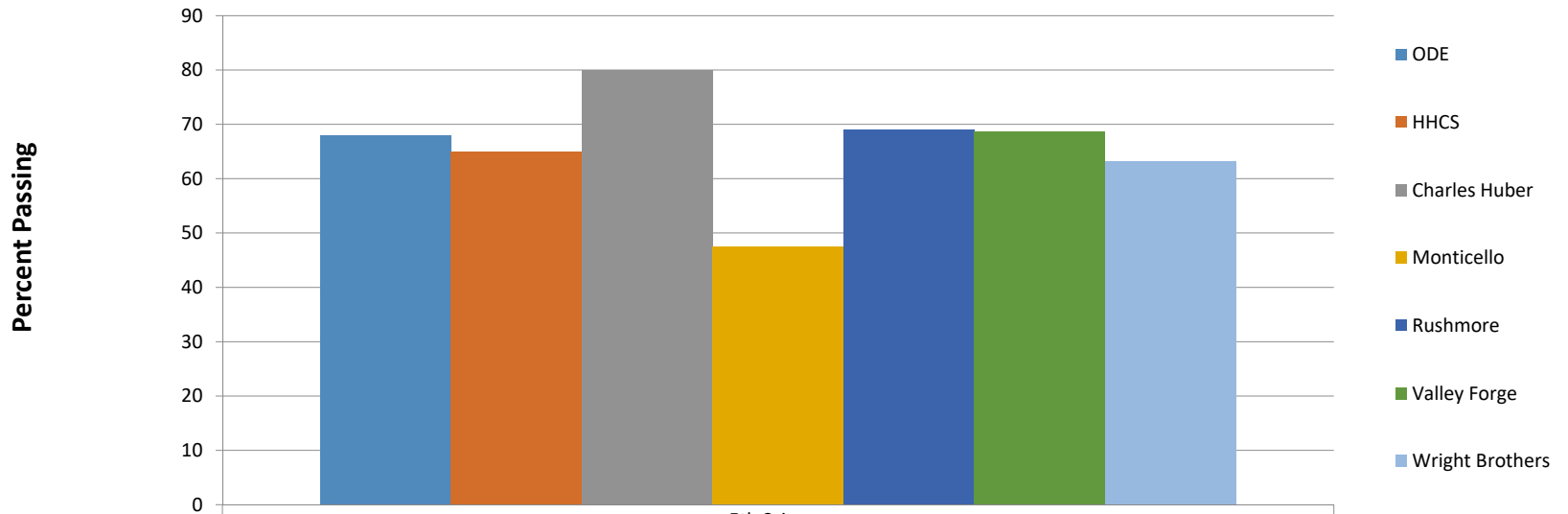
Compares achievement results of the same group of students as they progress from one grade to the next)

Trend: Math 7th-Geo Grade Growth (2017-2018)

	ODE		HHCS		Weisenborn		Wayne	
	2018	2017	2018	2017	2018	2017	2018	2017
7th	58	55	46.4	47	45.5	46		
8th	53	54	21.3	24	19.9	24		
Alg I	52	50	46.2	31	82.4	80	32.6	19
Geo	42	46	34.1	28			32.1	27

Compares achievement results of the same group of students as they progress from one grade to the next)

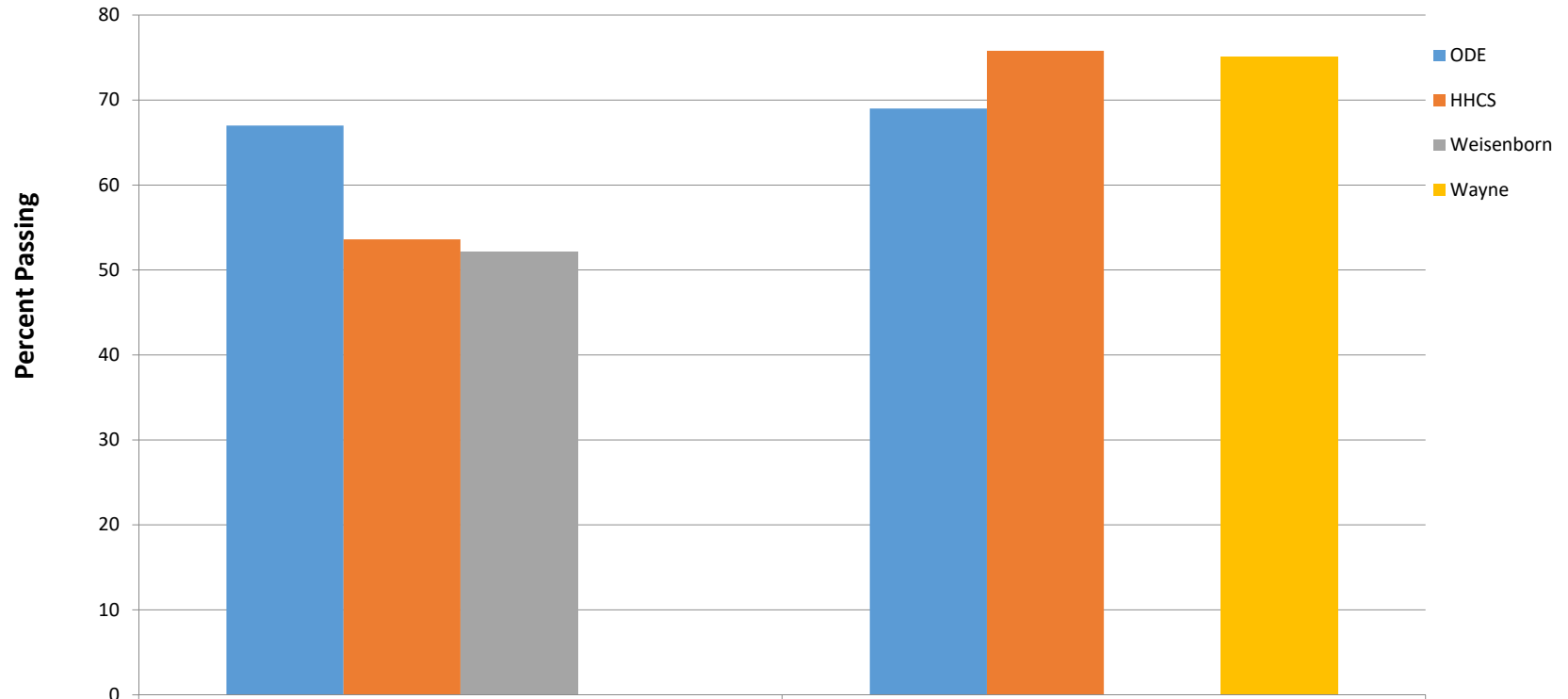
Science Ohio State Test Results - Spring 2018



	5th Science
ODE	68
HHCS	65
Charles Huber	80
Monticello	47.5
Rushmore	69.1
Valley Forge	68.7
Wright Brothers	63.3

Grade Level by Building

Science Ohio State Test Results - Spring 2018



	8th Science	Biology
ODE	67	69
HHCS	53.6	75.8
Weisenborn	52.2	
Wayne		75.1

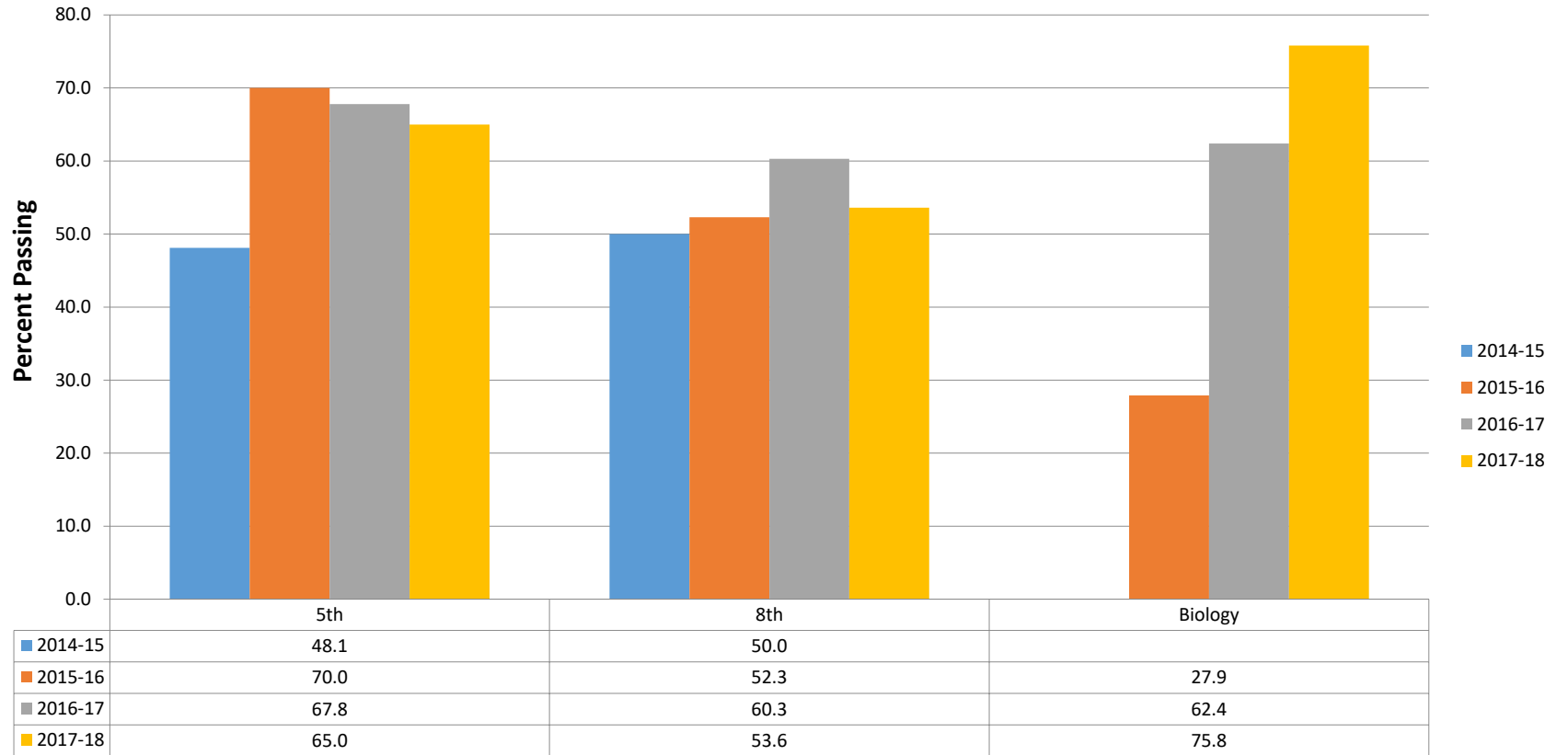
Grade Level by Building

Science Comparative Highlights

Performing at/above the state average:

- (5th grade) Charles Huber (met indicator), Rushmore & Valley Forge
- (Biology) Wayne

Science Spring 2015 - Spring 2018 Comparison

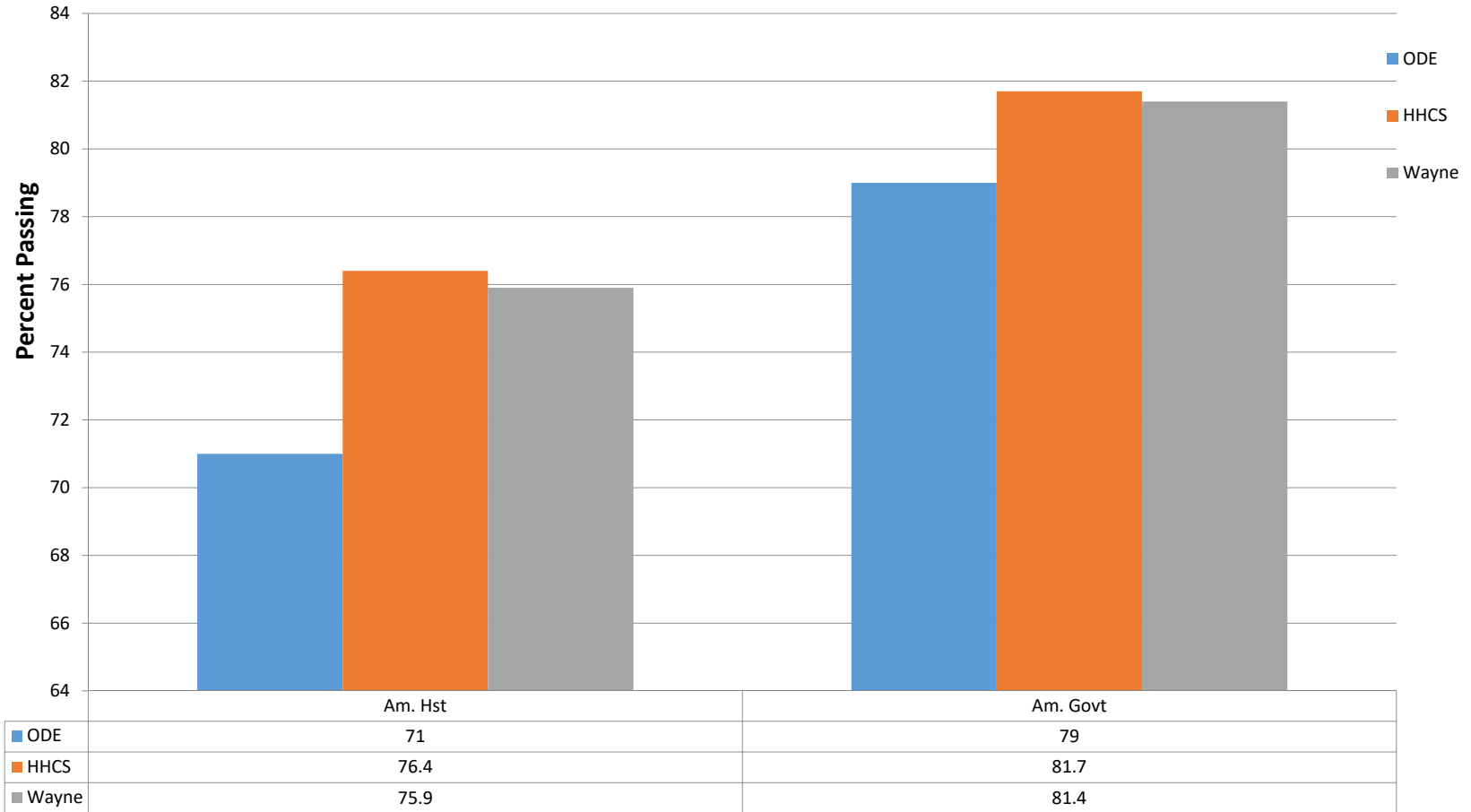


Grade Level/Subject

Science Achievement Results Comparison of 2018 to 2016

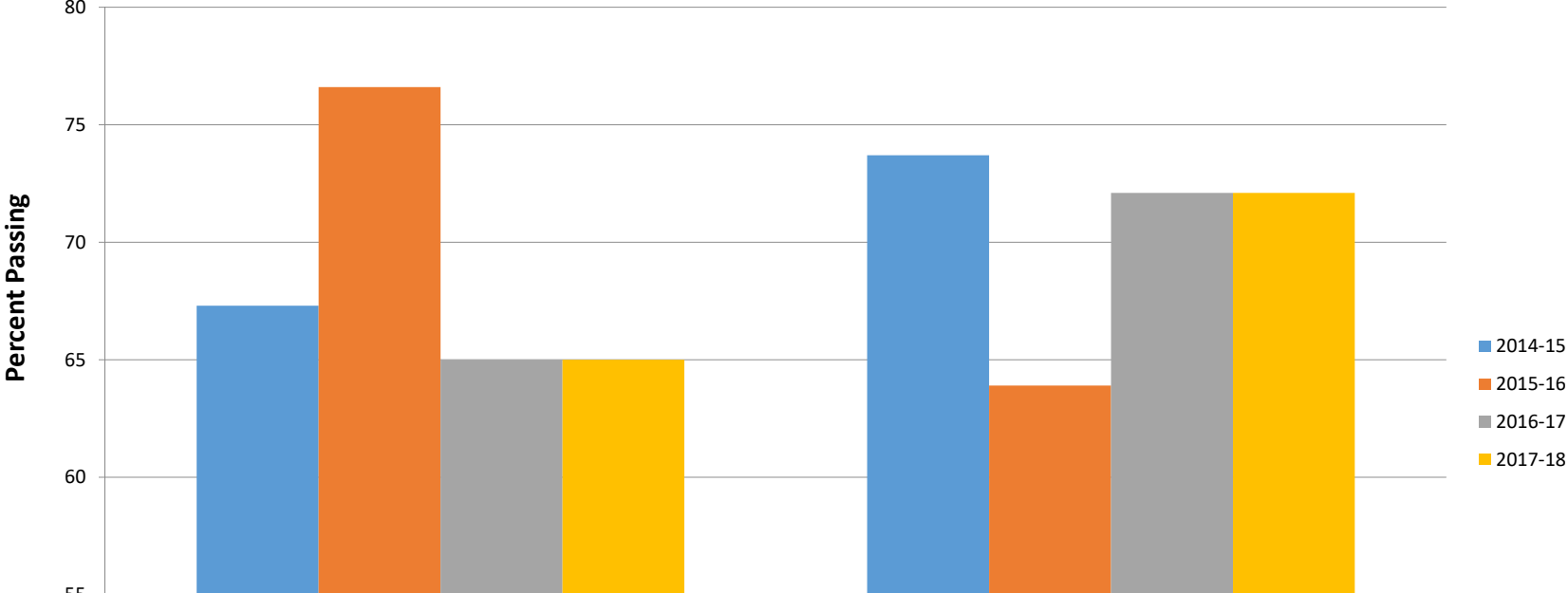
Exam	2018 Results	2017 Results	2016 Results
Grade 5 Science	65%	67.6%	70.0%
Grade 8 Science	53.6%	60.3%	52.3%
Biology	75.8%	62.4%	27.9%

Social Studies Ohio State Test Results - Spring 2018



Grade Level by Building

Social Studies Spring 2015 - Spring 2018 Comparison



	Am. HST	Am. Govt
2014-15	67.3	73.7
2015-16	76.6	63.9
2016-17	65.0	72.1
2017-18	65.0	72.1

Grade Level/Subject

Social Studies Achievement Results Comparison of 2018 to 2016

Exam	2018 Results	2017 Results	2016 Results
Am. History	76.4%	65%	76.6%
Am. Government	81.7%	72.1%	63.9%

Social Studies Comparative Highlights

Performing at/above the state average:

- (American History) Wayne
- (American Government) Wayne (met indicator)

Growth Data/ Progress

Overall

This measures the progress for all students in math and reading, grades 4-8.

GRADE	Subgroup	Grade	Progress Score (Gain Index)								
			Reading	Mathematics	Social Studies	Science	All Tests	English I	English II	Algebra I	Geometry
F	Overall	All Grades	-12.52	-2.67	0.20	-6.01	-11.47	--	--	--	--
		4th Grade	0.30	2.20	--	--	1.54	--	--	--	--
		5th Grade	-9.85	4.47	--	-0.19	-3.96	--	--	--	--
		6th Grade	-4.37	6.84	0.20	--	1.02	--	--	--	--
		7th Grade	-5.73	0.39	--	--	-3.82	--	--	--	--
		8th Grade	-4.60	-15.55	--	-8.22	-14.79	--	--	--	--
		High School	--	--	--	--	--	-5.34	3.89	-7.84	-0.34

Gifted Students

This measures the progress for students identified as gifted in reading, math, and/or superior cognitive

GRADE	Subgroup	Grade	Progress Score (Gain Index)								
			Reading	Mathematics	Social Studies	Science	All Tests	English I	English II	Algebra I	Geometry
C	Gifted	All Grades	-1.72	--	--	--	--	--	--	--	--
		4th Grade	2.58	--	--	--	--	--	--	--	--
		5th Grade	-2.14	--	--	--	--	--	--	--	--
		6th Grade	0.04	--	--	--	--	--	--	--	--
		7th Grade	-2.38	--	--	--	--	--	--	--	--
		8th Grade	-2.20	--	--	-0.22	-1.54	--	--	--	--
		High School	--	--	--	--	--	-1.54	2.86	-2.08	0.34

INSERT 2018 DATA

Students in the Lowest 20% of Achievement

This measures the progress for students identified as the lowest 20% statewide in reading and math achievement.

GRADE	Subgroup	Grade	Progress Score (Gain Index)								
			Reading	Mathematics	Social Studies	Science	All Tests	English I	English II	Algebra I	Geometry
C	Lowest 20%	All Grades	-4.38	4.24	0.25	-2.26	0.08	--	--	--	--
		4th Grade	-2.63	3.13	--	--	0.38	--	--	--	--
		5th Grade	-2.67	2.91	--	0.62	0.25	--	--	--	--
		6th Grade	-0.55	4.23	0.25	--	2.00	--	--	--	--
		7th Grade	-2.39	1.22	--	--	-0.89	--	--	--	--
		8th Grade	-1.74	-6.48	--	-3.69	-6.51	--	--	--	--
		High School	--	--	--	--	--	-2.00	2.68	0.18	4.93

Students with Disabilities

This measures the progress for students with disabilities.

GRADE	Subgroup	Grade	Progress Score (Gain Index)								
			Reading	Mathematics	Social Studies	Science	All Tests	English I	English II	Algebra I	Geometry
C	Students w/ Disabilities	All Grades	-3.65	3.49	0.12	-0.37	-0.62	--	--	--	--
		4th Grade	-3.02	1.71	--	--	-1.07	--	--	--	--
		5th Grade	-0.18	3.37	--	-0.17	1.61	--	--	--	--
		6th Grade	0.61	3.10	0.12	--	2.12	--	--	--	--
		7th Grade	-1.34	0.56	--	--	-0.61	--	--	--	--
		8th Grade	0.88	-2.39	--	-0.35	-0.93	--	--	--	--
		High School	--	--	--	--	--	-4.76	-0.51	-0.40	2.37

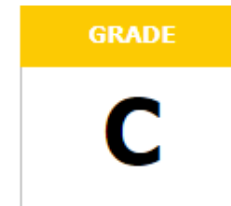
K-3 Literacy

2018 K-3 Literacy Data for Huber Heights City

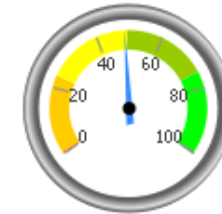
IRN: 048751

Not On-Track at Point A		Improving to On-Track at Point B		
Kindergarten Reading Diagnostic, School Year 2016 - 2017	190	to	1st Grade Reading Diagnostic, School Year 2017 - 2018	139
1st Grade Reading Diagnostic, School Year 2016 - 2017	150	to	2nd Grade Reading Diagnostic, School Year 2017 - 2018	76
2nd Grade Reading Diagnostic, School Year 2016 - 2017	136	to	3rd Grade Reading Diagnostic, School Year 2017 - 2018	53
3rd Grade Reading Diagnostic, School Year 2017 - 2018	123	to	3rd Grade Reading OST, School Year 2017 - 2018	22
Deduction for 3rd graders who did not pass OST and were not on a Reading Improvement and Monitoring Plan				0
Totals		599	290	

[Analyze...](#)



K-3 Literacy



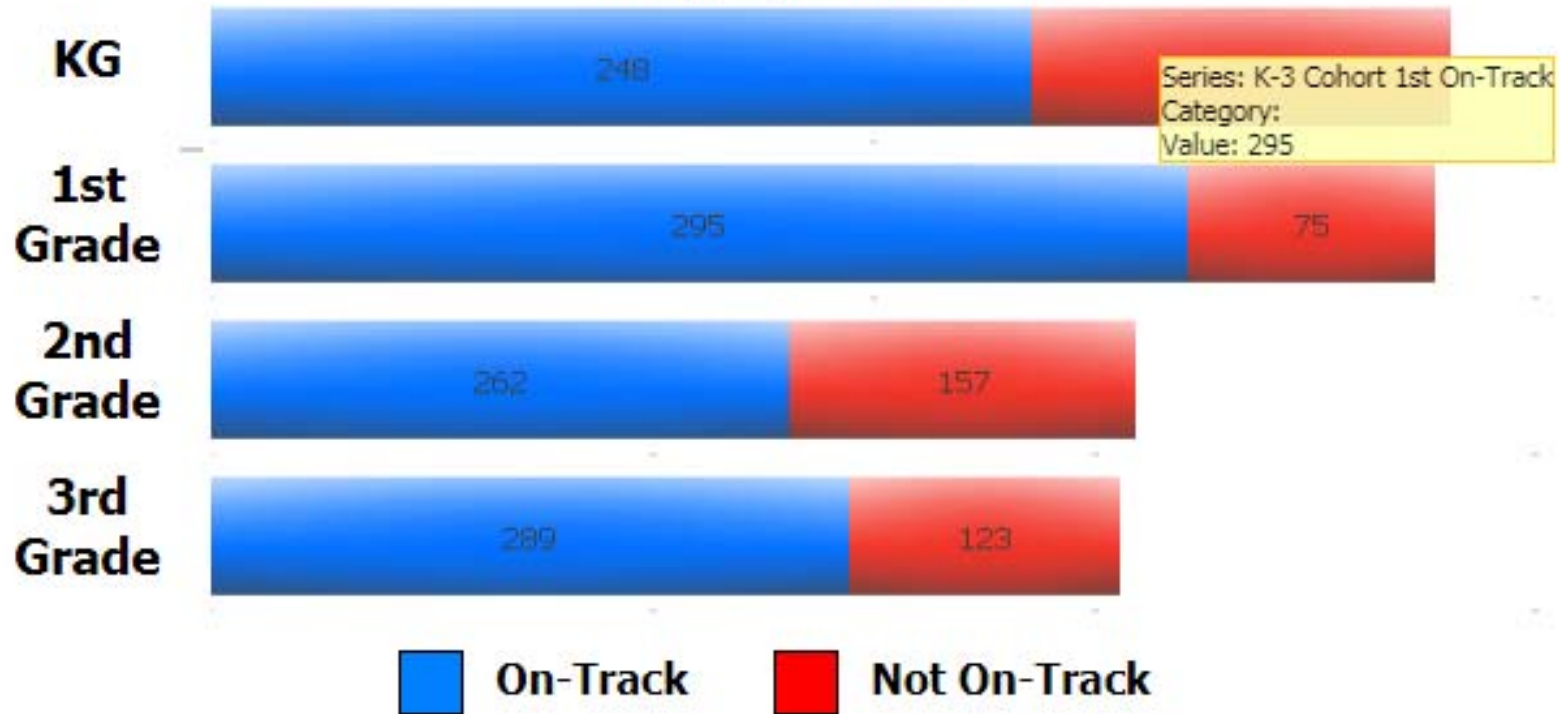
48.4%

290 out of 599

A = 78.3 - 100.0%
 B = 56.6 - 78.2%
 C = 34.9 - 56.5%
 D = 13.2 - 34.8%
 F = <= 13.1%

Students On-Track in Reading Diagnostic

This chart shows the overall percentage of students that were on-track/not-on-track for each grade level reading diagnostic in 2017-2018.



Grade Level	On Track		Not On-Track	
	2017	2018	2017	2018
Kindergarten	45%	66%	55%	34%
1 st Grade	56%	80%	44%	20%
2 nd Grade	60%	63%	40%	37%
3 rd Grade	70%	70%	30%	30%

4-Year Graduation Rate

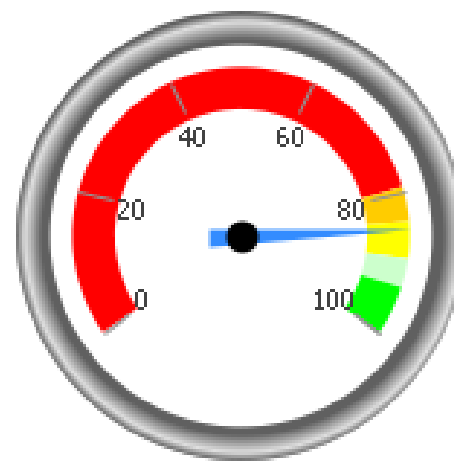
The 4-year graduation rate applies to the Class of 2017 who graduated within four years, i.e. students who entered the 9th grade in 2014 and graduated by 2017.

**Class of 2017
Graduates:**
359

**Students
Countable in
Class of 2017**
422

Graduation Rate:

85.1



GRADE

C

A = 93.0 - 100.0%
B = 89.0 - 92.9%
C = 84.0 - 88.9%
D = 79.0 - 83.9%
F = 0.0 - 78.9%

5-Year Graduation Rate

The 5-year graduation rate applies to the Class of 2016 who graduated within five years, i.e. students who entered the 9th grade in 2013 and graduated by 2017.

Class of 2016

Graduates:

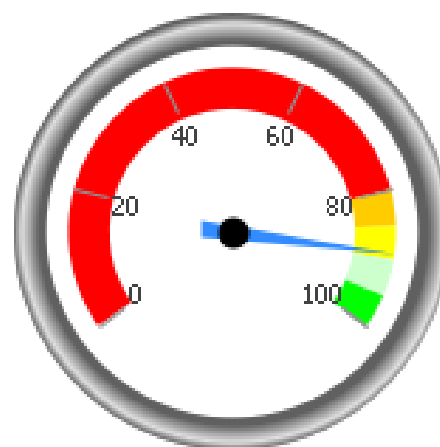
418

**Students
Countable in
Class of 2016**

470

Graduation Rate:

88.9



GRADE

C

A = 95.0 - 100.0%
B = 90.0 - 94.9%
C = 85.0 - 89.9%
D = 80.0 - 84.9%
F = 0.0 - 79.9%

Gifted Indicator Final Result

The Gifted Indicator is Met if none of the three components are Not Met. Gifted Inputs alone cannot determine the Gifted Indicator, however; if both the Value Added and Performance Index components are NC, then the Gifted Indicator is also NC.

INDICATOR
Not Met

Value Added Met?:	Met
Performance Index Met?:	Not Met
Gifted Inputs Met?:	Not Met

	Gifted Inputs	Performance Index	Value Added
Charles Huber	Met	Not Met	Met
Monticello	Met	Not Met	Met
Rushmore	Not Met	Not Met	Met
Valley Forge	Met	Not Met	Met
Wright Brothers	Met	Not Met	Met
Weisenborn	Met	Met	Not Met
Wayne	Not Met	Not Met	Met

Building	Subgroup	Value- Added 2018	Value- Added 2017	Value- Added 2016
HHCS	Gifted	C	C	B
	Lowest 20%	D	C	B
	Overall	F	F	F
	SWD	D	C	C
Charles Huber	Gifted	C	C	D
	Lowest 20%	B	C	C
	Overall	A	C	C
	SWD	C	C	C
Monticello	Gifted	C	C	
	Lowest 20%	B	A	B
	Overall	C	A	C
	SWD	C	B	C
Rushmore	Gifted	C	C	
	Lowest 20%	C	C	C
	Overall	C	D	C
	SWD	A	B	C

Building	Subgroup	Value- Added 2018	Value- Added 2017	Value- Added 2016
Valley Forge	Gifted	A		B
	Lowest 20%	A	B	D
	Overall	C	F	C
	SWD	B	B	
Wright Brothers	Gifted	C	D	
	Lowest 20%	C	C	A
	Overall	A	A	A
	SWD	C	C	B
Weisenborn	Gifted	F	F	F
	Lowest 20%	F	F	F
	Overall	F	F	F
	SWD	F	D	C
Wayne	Gifted	C	B	A
	Lowest 20%	B	B	B
	Overall	F	F	C
	SWD	F	F	D

Comparison of 2018 to 2016

Component	2018	2017	2016
K-3 Literacy	C	C	F
Performance Index	D	D	D
Graduation Rate	C/C	C/C	C/C
Performance Index Score	65.2%	65.4%	63.2%

2018 Gap Closing

AMO - English Language Arts Proficiency

Subgroup	Metrics	Took Test #	Perf Index	Goal	LT Goal	LT Gap	Took Test LY #	Perf Index LY	Improve	LT Gap Close %	VA Gain Index	Points
All Students		3,482	81.812	83.8	100.0	18.2	3,421	78.797	3.0	16.6	1.7	100.0
Am. Indian or Alaskan Native		5	NC	78.6	88.1	NC	6	NC	NC	NC	NC	NR
Asian or Pacific Islander		70	92.000	92.4	95.8	3.8	77	92.564	-0.6	-14.8	-0.6	0.0
Black, Non-Hispanic		742	71.629	63.4	79.7	N/A	731	68.349	N/A	N/A	-0.1	100.0
Hispanic		211	82.227	71.8	84.4	N/A	191	76.859	N/A	N/A	1.0	100.0
Multiracial		352	80.852	78.3	88.0	N/A	320	78.433	N/A	N/A	0.7	100.0
White, Non-Hispanic		2,102	85.133	86.3	92.4	7.3	2,096	82.126	3.0	41.4	1.4	100.0
Economic Disadvantage		1,876	76.367	70.8	83.8	N/A	1,835	72.835	N/A	N/A	1.0	100.0
English Learner		103	72.718	65.6	80.9	N/A	96	69.691	N/A	N/A	1.2	100.0
Students with Disabilities		529	54.953	57.3	76.3	21.3	515	52.437	2.5	11.8	-0.9	100.0

Total of Subgroup Points: 800.0

Possible Subgroup Points: 900.0

English Language Arts Points Earned (Total / Possible): 88.9

AMO - Math Proficiency

Subgroup	Metrics	Took Test #	Perf Index	Goal	LT Goal	LT Gap	Took Test LY #	Perf Index LY	Improve	LT Gap Close %	VA Gain Index	Points
All Students		3,366	72.824	84.2	100.0	27.2	3,344	73.708	-0.9	-3.3	-7.7	0.0
Am. Indian or Alaskan Native		5	NC	76.8	87.1	NC	6	NC	NC	NC	NC	NR
Asian or Pacific Islander		63	89.206	97.8	98.8	9.6	73	88.784	0.4	4.4	0.5	44.0
Black, Non-Hispanic		727	61.029	61.3	78.5	17.5	722	60.633	0.4	2.3	-2.3	22.7
Hispanic		204	72.402	72.3	84.6	N/A	191	71.458	N/A	N/A	-1.7	100.0
Multiracial		345	67.797	77.7	87.6	19.8	304	74.620	-6.8	-34.5	-4.9	0.0
White, Non-Hispanic		2,022	77.417	87.6	93.1	15.7	2,048	77.824	-0.4	-2.6	-5.9	0.0
Economic Disadvantage		1,827	66.679	71.1	84.0	17.3	1,818	67.336	-0.7	-3.8	-5.6	0.0
English Learner		102	67.745	70.1	83.4	15.7	96	70.206	-2.5	-15.7	-1.4	0.0
Students with Disabilities		523	48.588	58.2	76.8	28.2	514	50.793	-2.2	-7.8	-1.1	0.0

Total of Subgroup Points: 166.7

Possible Subgroup Points: 900.0

Math Points Earned (Total / Possible): 18.5

AMO - Graduation Rate

Subgroup	Metrics	Grads #	Non-Grads #	Cohort Students #	Grad Rate %	Goal	Gap	Grads LY #	Non-Grads LY #	Cohort Students LY #	Grad Rate LY %	Improve	Points
All Students		359	63	422	85.1	85.0	N/A	411	61	472	87.1	-2.0	100.0
Am. Indian or Alaskan Native		0	0	0	NC	78.8	NC	0	0	0	NC	NC	NR
Asian or Pacific Islander		13	1	14	NC	88.8	NC	6	2	8	NC	NC	NR
Black, Non-Hispanic		85	19	104	81.7	68.5	N/A	94	21	115	81.7	0.0	100.0
Hispanic		17	1	18	NC	74.8	NC	23	2	25	92.0	NC	NR
Multiracial		30	4	34	88.2	79.9	N/A	32	3	35	91.4	-3.2	100.0
White, Non-Hispanic		214	38	252	84.9	88.5	8.1	256	33	289	88.6	-3.7	0.0
Economic Disadvantage		131	39	170	77.1	74.3	N/A	159	35	194	82.0	-4.9	100.0
English Learner		7	1	8	NC	59.0	NC	3	3	6	NC	NC	NR
Students with Disabilities		41	16	57	71.9	72.3	12.7	46	20	66	69.7	2.2	100.0

Total of Subgroup Points: 500.0
Possible Subgroup Points: 600.0
Graduation Rate Points Earned (Total / Possible): 83.3

AMO - Preliminary Score

The preliminary score is the average of the English Language Arts, Math, and Graduation Rate from the preceding pages. The result is applied to the grading scale to determine a preliminary letter grade.

English Language Arts Points: 88.9
Math Points: 18.5
Graduation Rate Points: 83.3
English Learner Points: 100.0

Grade Scale:
 A = 90.0 - 100.0%
 B = 80.0 - 89.9%
 C = 70.0 - 79.9%
 D = 60.0 - 69.9%
 F = 0.0 - 59.9%

Preliminary Grade:

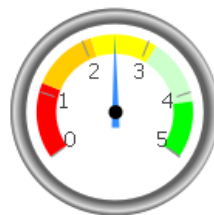
C

Preliminary Score: 72.7

AMO Percent to Points

Grade	Percentage	Points
A	97.5% - 100.0%	5
	95.0% - 97.4%	4.75
	92.5% - 94.9%	4.5
	90.0% - 92.4%	4.25
B	87.5% - 89.9%	4
	85.0% - 87.4%	3.75
	82.5% - 84.9%	3.5
	80.0% - 82.4%	3.25
C	77.5% - 79.9%	3
	75.0% - 77.4%	2.75
	72.5% - 74.9%	2.5
	70.0% - 72.4%	2.25
D	67.5% - 69.9%	2
	65.0% - 67.4%	1.75
	62.5% - 64.9%	1.5
	60.0% - 62.4%	1.25
F	45.0% - 59.9%	1
	30.0% - 44.9%	0.75
	15.0% - 29.9%	0.5
	0.0% - 14.9%	0

Although not needed to calculate the Gap Closing grade, points will be assigned to the AMO measure in 2018 as part of determining an Overall Report Card grade. The points table is included here for reference, but is part of no calculation this school year.



Grade Scale:

A = 4.125 - 5.000
 B = 3.125 - 4.124
 C = 2.125 - 3.124
 D = 1.125 - 2.124
 F = 0.000 - 1.124

GRADE
C

Because the Gap Closing component consists only of AMOs, the Gap Closing Grade is the same as the AMO grade.

Systems, Structures and Adoptions in Place to Sustain and Stimulate Growth:

- Common Formative Assessments
- K-8th Grade Math Textbook Adoption
- Professional Development Days
- K-6th Grade Half Day Math Collaborative Meetings
- 7th-8th Grade Embedded Math Professional Development (Instructional Coaching)
- 3rd Grade Fall Tutoring
- Additional planning meetings (junior high and high school)

Part of the story...

Report Cards are only one part of the story of what is happening in a district or school. To get a fuller picture, visit schools, talk to teachers, administrators, parents and students, and visit the school's or district's webpage. A lot of great things are happening every day.

