

2018 All Grades for Wayne High School

IRN: 040048
 School Type: High School
 Address: 5400 Chambersburg Rd
 Huber Heights, OH 45424-3700

District: Huber Heights City
 County: Montgomery
 ITC: MVECA

Achievement
 The Achievement component represents the number of students who passed the state tests and how well they performed on them.

Performance Index
 60.0%..... **D**

Indicators Met
 10.0%..... **F**

[VIEW MORE DATA](#) [VIEW GIFTED DATA](#)

COMPONENT GRADE
D

COMPONENT POINTS
1.313

Progress
 The Progress component looks closely at the growth that all students are making based on their past performances.

Value-Added
 Overall..... **F**
 Gifted..... **C**
 Lowest 20% 1st Achievement..... **B**
 Students with Disabilities..... **F**

[VIEW MORE DATA](#)

COMPONENT GRADE
D

COMPONENT POINTS
1.750

Gap Closing
 The Gap Closing component shows how well schools are meeting the performance expectations for our most vulnerable populations of students in English language arts, math and graduation.

Annual Measurable Objectives
 62.3%..... **D**

[VIEW MORE DATA](#)

COMPONENT GRADE
D

COMPONENT POINTS
1.250

Graduation Rate
 The Graduation Rate component looks at the percent of students who are successfully finishing high school with a diploma in four or five years.

Graduation Rates
 85.1% of students graduated in 4 years..... **C**
 88.8% of students graduated in 5 years..... **C**

[VIEW MORE DATA](#)

COMPONENT GRADE
C

COMPONENT POINTS
2.550

Improving At-Risk K-3 Readers
 The K-3 Literacy component looks at how successful the school is at getting struggling readers on track to proficiency in third grade and beyond.

K-3 Literacy Improvement
 0.0%..... **N**
R

[VIEW MORE DATA](#)

COMPONENT GRADE
NR

COMPONENT POINTS
NA

Prepared for Success
 Whether training in a technical field or preparing for work or college, the Prepared for Success component looks at how well prepared Ohio's students are for all future opportunities.

[VIEW DATA](#)

COMPONENT GRADE
F

COMPONENT POINTS
0.750

Component	Component Points	Component Weight	Weighted Points
Achievement Points:	1.313	x 23.00%	= 0.302
Progress Points:	1.750	x 23.00%	= 0.403
Gap Closing Points:	1.250	x 18.00%	= 0.225
Graduation Rate Points:	2.550	x 18.00%	= 0.459
K-3 Literacy Points:	NA	x 0.00%	=
Prepared for Success Points:	0.750	x 18.00%	= 0.403

Overall Points: 1.523



FINAL GRADE
D

A = 4.125 - 5.000
 B = 3.125 - 4.124
 C = 2.125 - 3.124
 D = 1.125 - 2.124
 F = 0.000 - 1.124

[Click here](#) to see the Secure Data Center - Status of Reports report

2018 Progress Data for Wayne High School

IRN: 040048
 School Type: High School
 Address: 5400 Chambersburg Rd
 Huber Heights, OH 45424-3700

District: Huber Heights City
 County: Montgomery
 ITC: MVECA

Overall

This measures the progress for all students in math and reading, grades 4-8.

GRADE	Subgroup	Grade	Progress Score (Gain Index)						
			Overall Composite	Algebra I	English Language Arts	English Language Arts I	English Language Arts II	Geometry	Mathematics
F	Overall	Composite Grades	-6.2	-6.0	-2.7	-7.9	4.6	-2.8	-6.2

Gifted Students

This measures the progress for students identified as gifted in reading, math, and/or superior cognitive ability.

GRADE	Subgroup	Grade	Progress Score (Gain Index)					
			Overall Composite	English Language Arts	English Language Arts I	English Language Arts II	Geometry	Mathematics
C	Gifted	Composite Grades	0.8	0.4	-2.2	2.5	0.9	0.9

Students in the Lowest 20% of Achievement

This measures the progress for students identified as the lowest 20% statewide in reading and math achievement.

GRADE	Subgroup	Grade	Progress Score (Gain Index)						
			Overall Composite	Algebra I	English Language Arts	English Language Arts I	English Language Arts II	Geometry	Mathematics
B	Low 20	Composite Grades	1.5	-2.0	1.0	-1.6	3.0	3.9	1.2

Students with Disabilities

This measures the progress for students with disabilities.

GRADE
F

Subgroup	Grade	Progress Score (Gain Index)						
		Overall Composite	Algebra I	English Language Arts	English Language Arts I	English Language Arts II	Geometry	Mathematics
SWD	Composite Grades	-2.6	-1.6	-3.9	-4.8	-0.3	2.1	0.1

Progress Component Grade

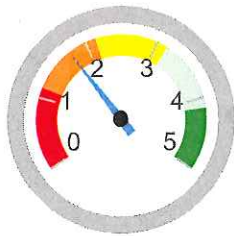
Points are assigned to the Overall, Gifted, Lowest 20%, and Students with Disabilities Value Added grades.

- A = 5 points
- B = 4 points
- C = 3 points
- D = 2 points
- F = 1 point

The weighting for each subgroup's points varies depending on how many subgroups were graded.

If you have this many subgroups	Then the "Overall" subgroup is weighted	And the other subgroups are weighted
4	55%	15%
3	63.25%	18.375%
2	71.5%	28.5%
1	100%	N/A

Subgroup	Grade	Points	Weight	Final Points
Overall	F	1	55.000%	0.550
Gifted	C	3	15.000%	0.450
Lowest 20%	B	4	15.000%	0.600
Students w/ Disab	F	1	15.000%	0.150
Total Points				1.750



Grade Scale:

- A = 4.125 - 5.000
- B = 3.125 - 4.124
- C = 2.125 - 3.124
- D = 1.125 - 2.124
- F = 0.000 - 1.124

GRADE
D

Note: If any subgroup grade is C, D, or F, then the final grade can be no higher than B.

[Click here](#) to see the Secure Data Center - Status of Reports report

Systems, Structures and Adoptions in Place to Sustain and Stimulate Growth:

- Common Formative Assessments
- K-8th Grade Math Textbook Adoption
- Professional Development Days
- K-6th Grade Half Day Math Collaborative Meetings
- 7th-8th Grade Embedded Math Professional Development (Instructional Coaching)
- 3rd Grade Fall Tutoring
- Additional planning meetings (junior high and high school)

Part of the story...

Report Cards are only one part of the story of what is happening in a district or school. To get a fuller picture, visit schools, talk to teachers, administrators, parents and students, and visit the school's or district's webpage. A lot of great things are happening every day.

